



Installation Manual

Digital Aluminium Door Lock

No. **CL-AI3**



Please scan the QR code
to download Manual

Table of Contents

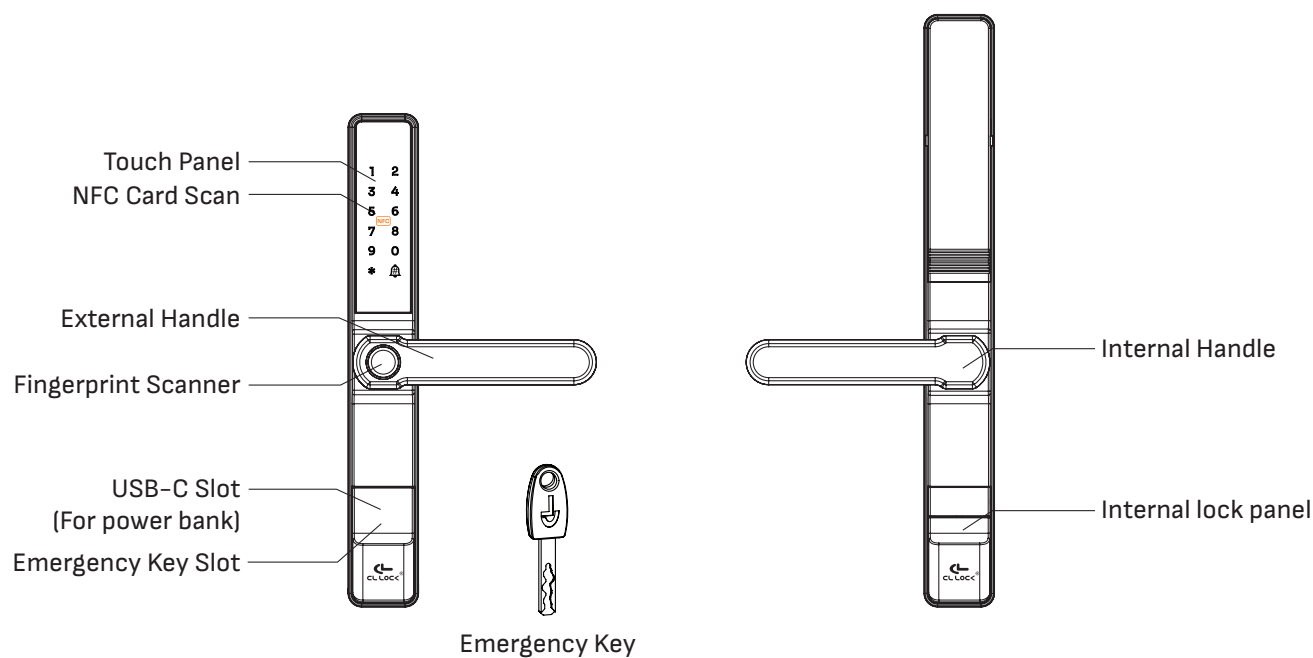
1. Components of the Digital Door Lock	1
2. Technical Parameters	1
3. Accessories of the Digital Door Lock	2
4. Additional Accessories for Door Thickness	3
5. Dimensions of the Digital Door Lock	4
6. Door Opening Directions	5
7. How to Switch the Handle (Left-Right)	6
8. How to adjust the spindle for left-hand or right-hand opening door	8
9. Reversible Latch Adjustment of the Mortise Lockcase	10
10. Warnings Before Installation	11
11. Installation Instructions	12
12. Product Warranty Policy	15
13. Safety Manual and Precautions	16
14. Additional Information	16

Digital Aluminium Door Lock

No. **CL-AI3**



1. Components of the Digital Door Lock

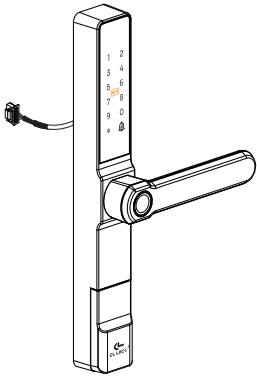


2. Technical Parameters

Administrator:	10 ID (No. 001–010)
User:	290 ID (No. 011–300)
Ways to Unlock:	Password, Fingerprint, NFC card, Emergency key, Application.
Network:	Wi-Fi 2.4 G
Power:	4 Pieces of AA alkaline battery
Low Battery Warning:	4.8–5 V
Emergency Power Supply:	USB type-C
Password Length:	6–10 digits (fake password can be up to 29 digits.)
Product Dimensions:	Internal <ul style="list-style-type: none"> • Excludes handle 36 × 325 × 25.5 mm • Includes handle 136 × 325 × 53.4 mm External <ul style="list-style-type: none"> • Excludes handle 36 × 270 × 25.5 mm • Includes handle 136 × 270 × 54.1 mm

3. Accessories of the Digital Door Lock

1



External handle lock (1 set)

2



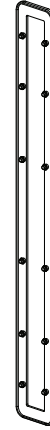
Rubber gasket for external handle lock (1 pc.)

3



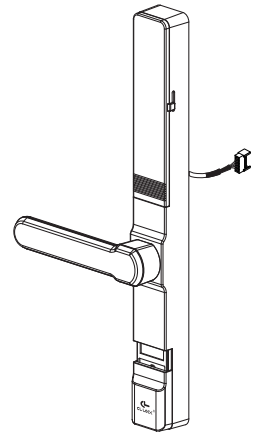
Mortise lockcase for sliding or swing door (1 set)

4



Rubber gasket for internal handle lock (1 pc.)

5



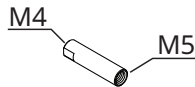
Internal handle lock (1 set)

6



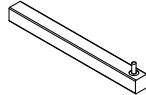
Screw M4x52 mm (2 pcs.)

7



M5-M4 threaded connector Length: 25 mm (2 pcs.)

8



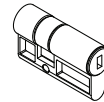
Spindle Length: 80 mm (1 pc.)

9



Emergency key (2 pcs.)

10



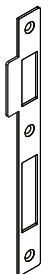
Euro profile cylinder key set (1 set)

11



Screw for euro profile cylinder, size M5x35, M5x38, M5x45 or M5x64 mm (1 pc.)

12



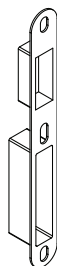
Strike plate (1 pc.)

13



M4 x 25 mm screw for mortise lock (2 pcs.) and for strike plate (3 pcs.)

14



Strike box (1 pc.)

15



Post-installation cover plate (1 pc.)


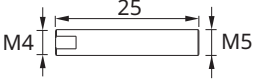
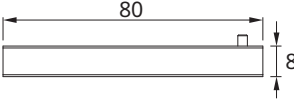
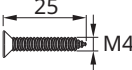
16



NFC card (2 pcs.)

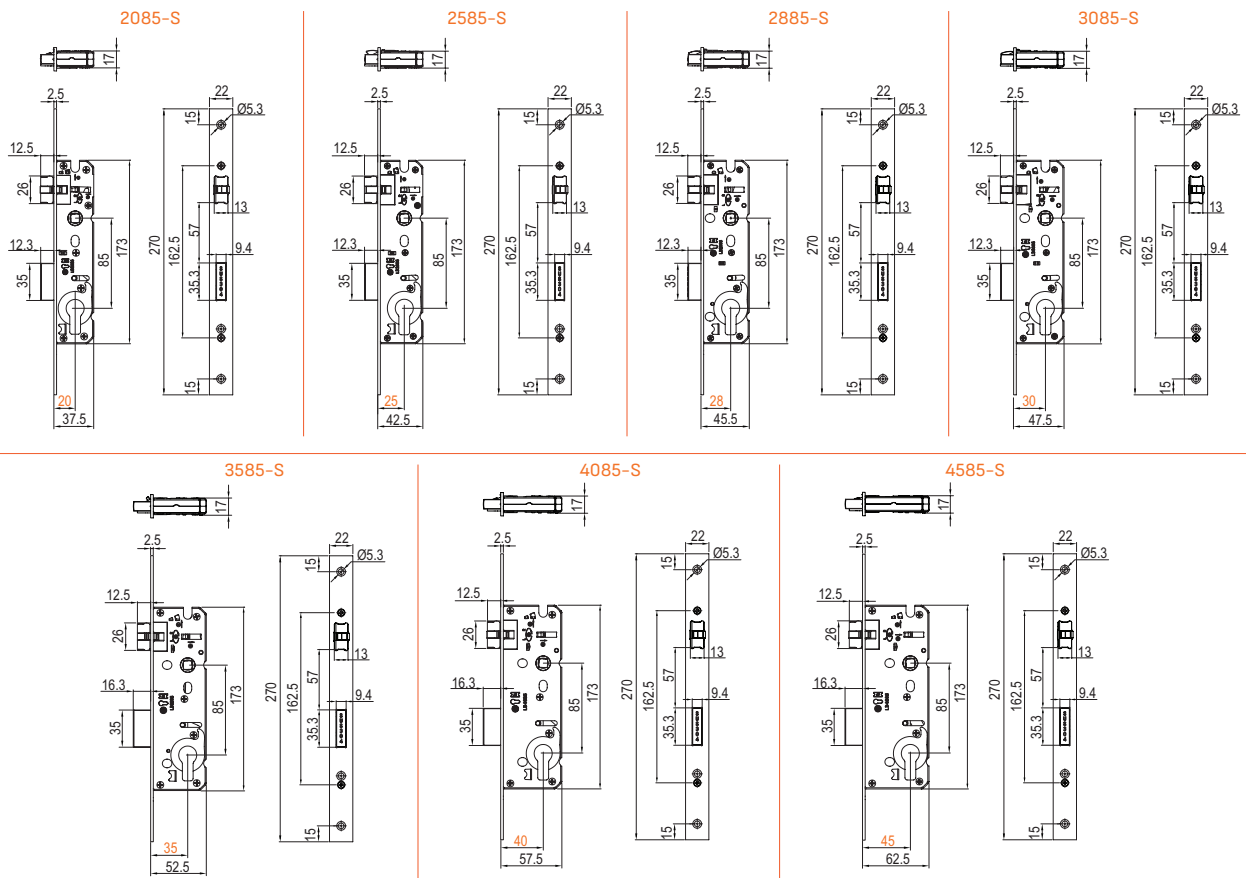
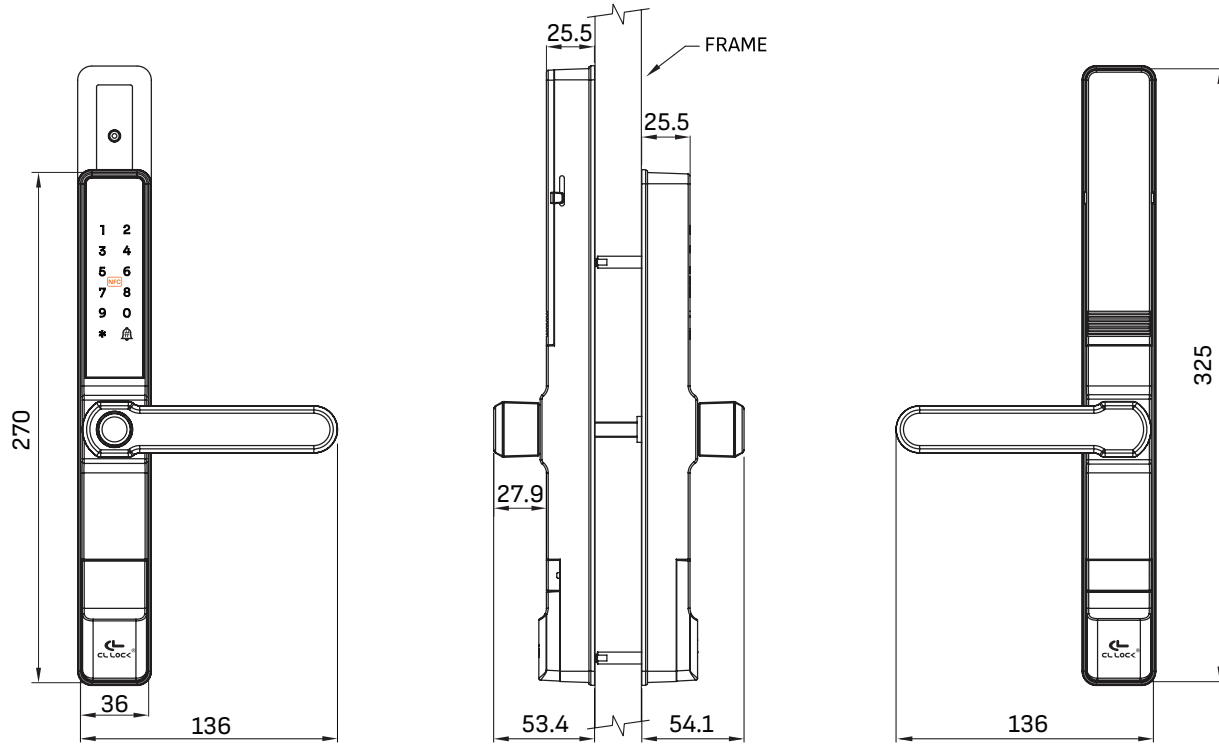
4. Additional Accessories for Door Thickness

Door thickness: 26–55 mm. If the door thickness falls outside this range, please contact us for more information. Please select the appropriate accessories based on the door thickness.

No	Details	Specification (mm)	Quantity
6	Screw M4×52 mm		2
7	M5–M4 threaded connector Length: 25 mm		2
8	Spindle Length: 80 mm		1
13	Screw M4×25 mm		5

5. Dimensions of the Digital Door Lock

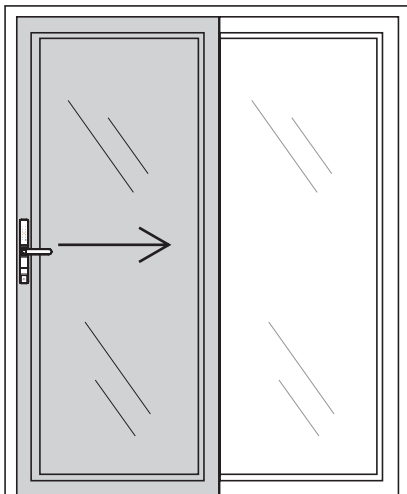
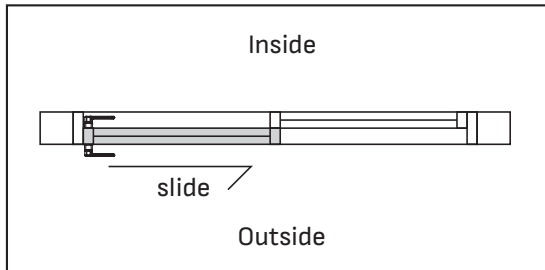
Unit: Millimeters



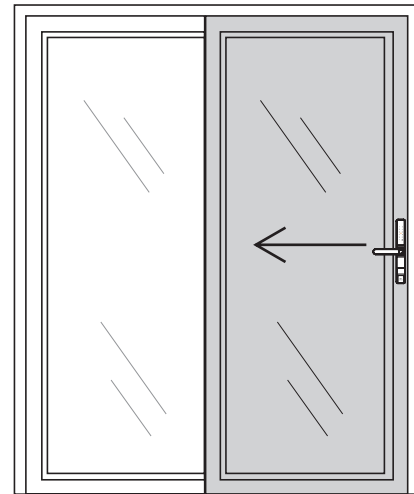
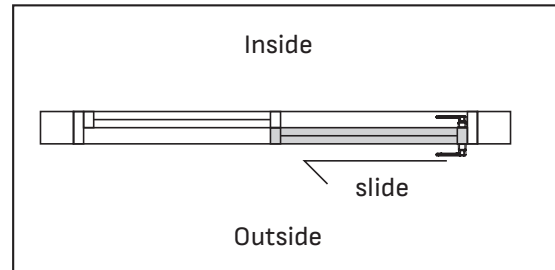
6. Door Opening Directions

Sliding Door

Right-hand opening door

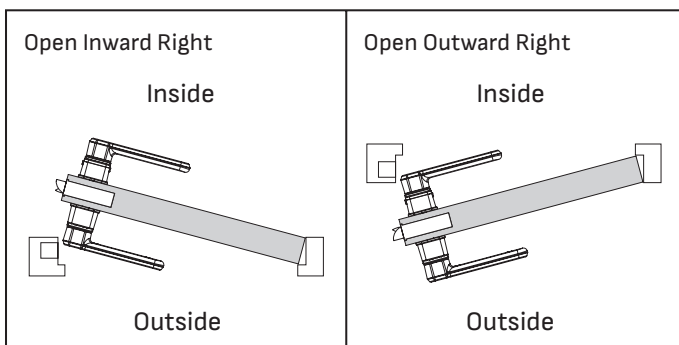


Left-hand opening door

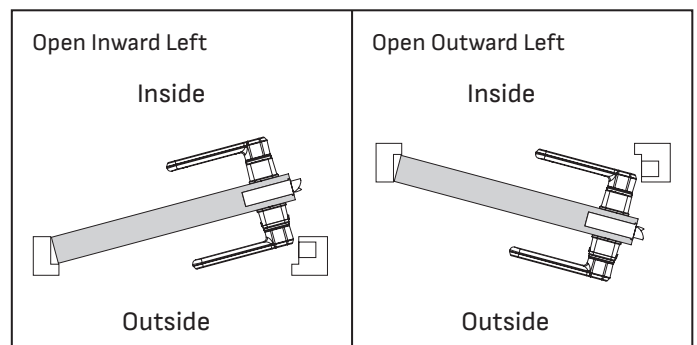


Swing Door

Right-hand opening door

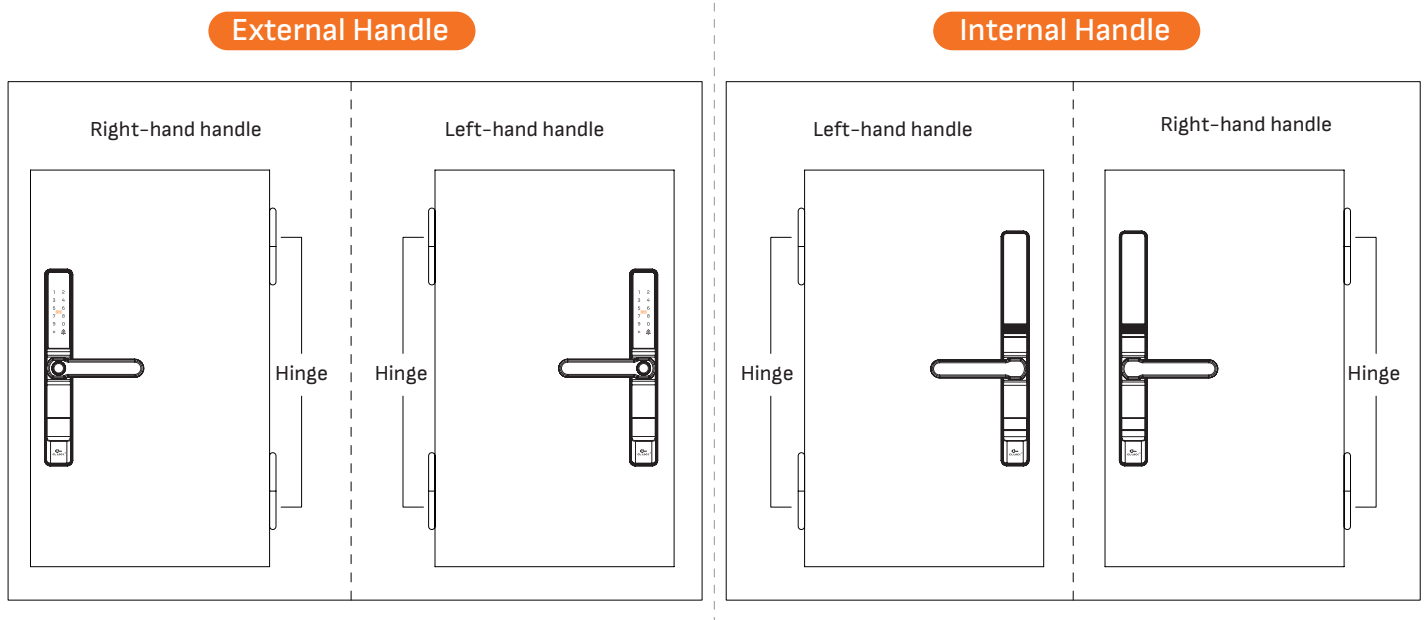


Left-hand opening door



7. How to Switch the Handle (Left-Right)

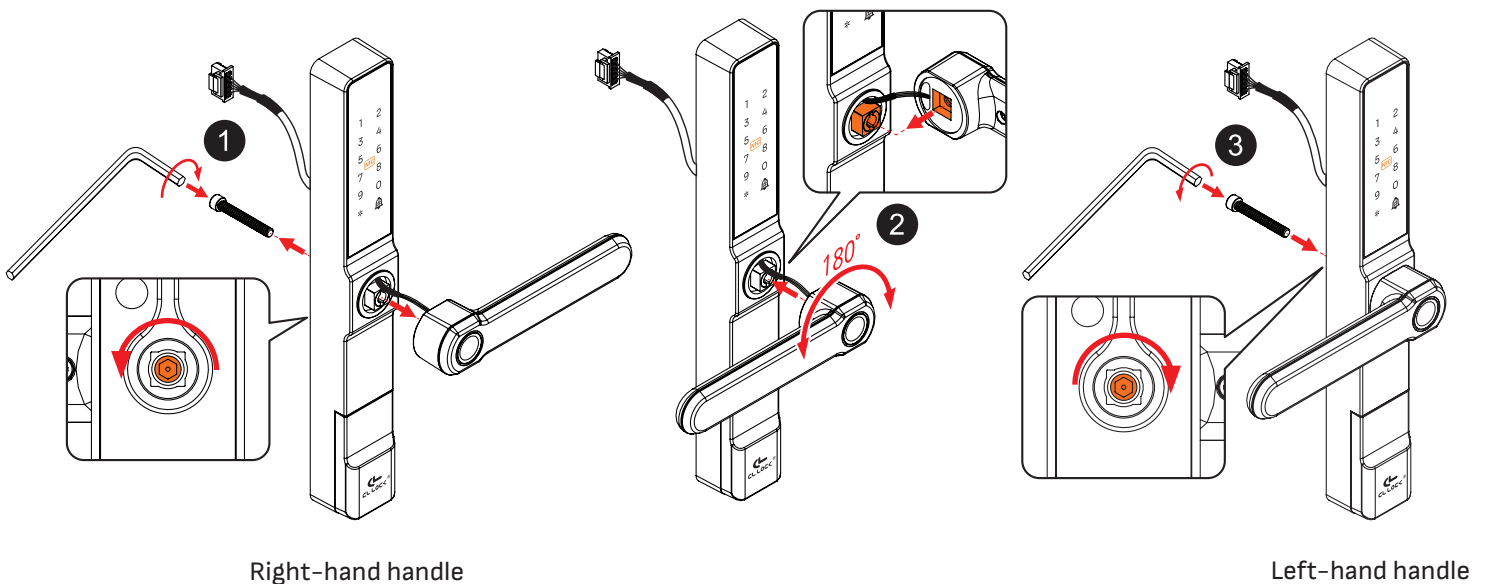
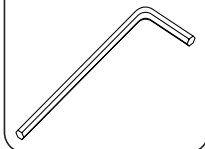
Handles can be adjusted as needed.



External Handle

1. Use a 4 mm hex key to loosen the internal hex-head male screw inside the handle by turning it counterclockwise.
2. Rotate the handle 180 degrees to the desired direction and reinstall it onto the original shaft, taking care not to damage the electrical wires.
3. Tighten the hex-head male screw by turning it clockwise.

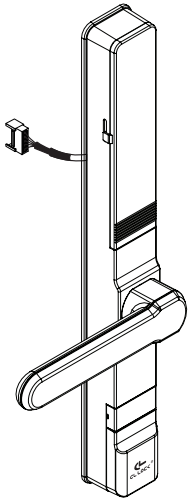
Tools Required:
4 mm Hex Key



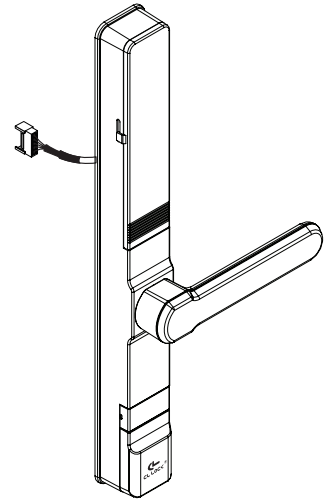
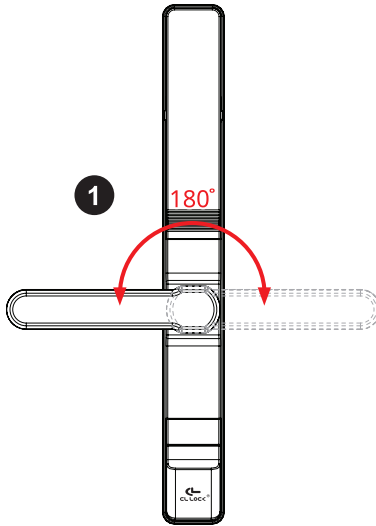
Internal Handle

Handles can be adjusted as needed.

1. Rotate the handle 180 degrees to the desired direction.



Left-hand handle



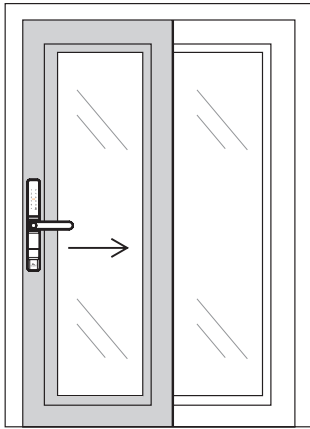
Right-hand handle

8. How to adjust the spindle for left-hand or right-hand opening door

You can adjust the spindle to suit left-hand or right-hand doors as needed.

Right-hand opening door

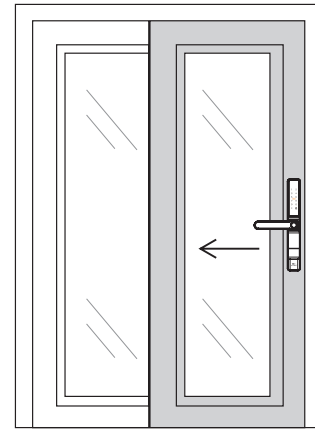
Outside



For a **right**-hand opening door,
install the lock on the left side of the door.

Left-hand opening door

Outside



For a **left**-hand opening door,
install the lock on the right side of the door.

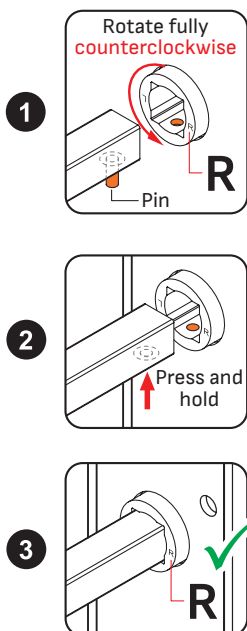
Spindle adjustment for right-hand opening door

1. Rotate the spindle slot counterclockwise until it stops.
The pin hole should be at the bottom, with the "R" marking on the right side.
2. Then, press and hold the pin on the spindle and insert the spindle until it locks into place.
3. Spindle adjustment completed.

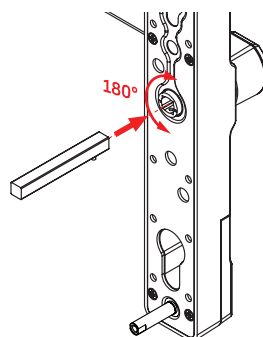
Spindle adjustment for left-hand opening door

1. Rotate the spindle slot clockwise until it stops.
The pin hole should be at the top, with the "L" marking on the right side.
2. Then, press and hold the pin on the spindle and insert the spindle until it locks into place.
3. Spindle adjustment completed.

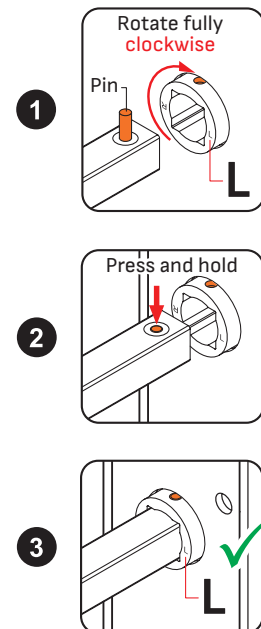
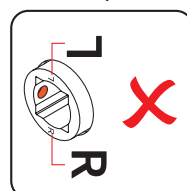
Adjust from the back



External handle lock



If **not fully rotated**,
the mortise lockcase
mechanism may malfunction.



Once the spindle is installed, it can be checked and adjusted from the front as follows.

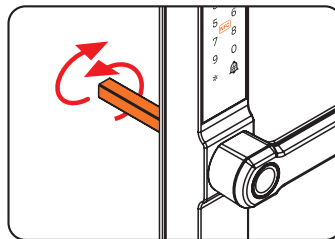
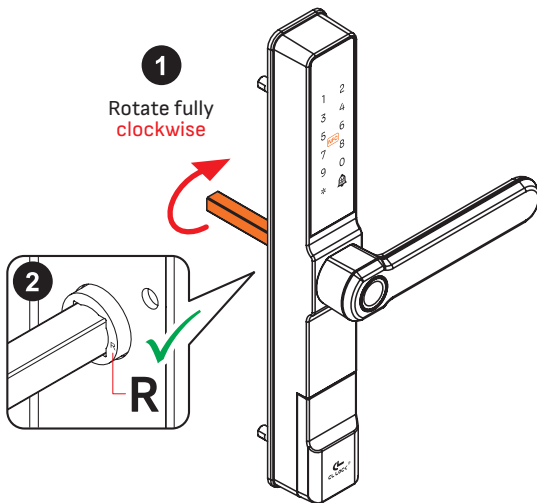
Spindle adjustment for right-hand opening door

1. Rotate the spindle fully clockwise
2. Spindle adjustment completed.
("R" marking should be on the right when viewed from the back.)

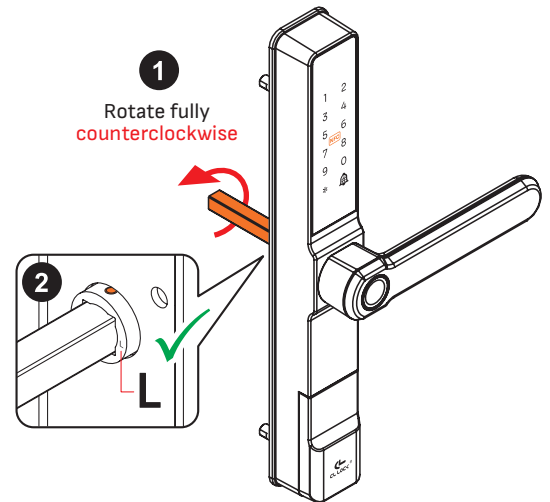
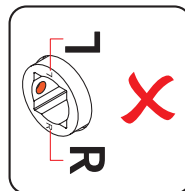
Spindle adjustment for left-hand opening door

1. Rotate the spindle fully counterclockwise
2. Spindle adjustment completed.
("L" marking should be on the right when viewed from the back.)

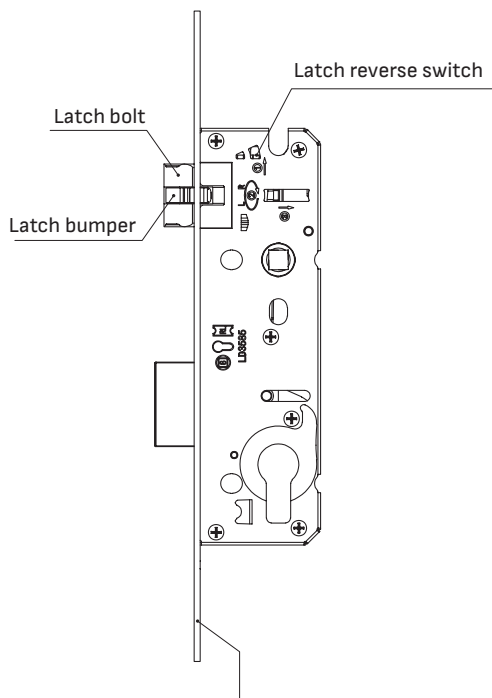
Adjust from the front



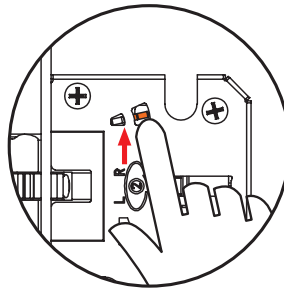
If **not fully rotated**, the mortise lockcase mechanism may malfunction.



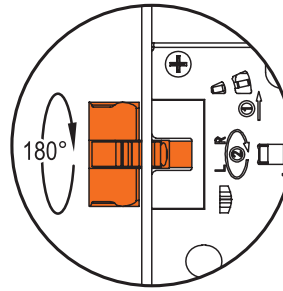
9. Reversible Latch Adjustment of the Mortise Lockcase



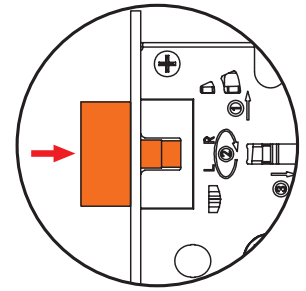
! Please do not remove the plate under any circumstances



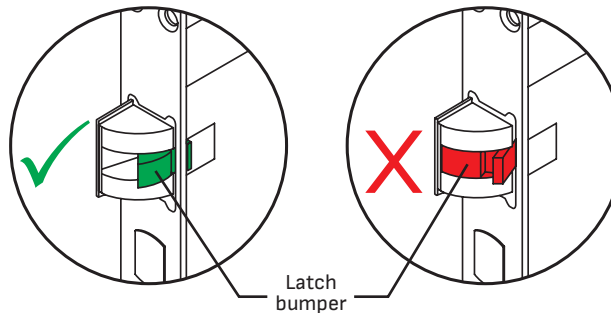
1. Push the Latch reverse switch up.



2. Rotate the latch bolt 180° to the left or right.



3. Push the latch bolt back into the mortise lockcase.

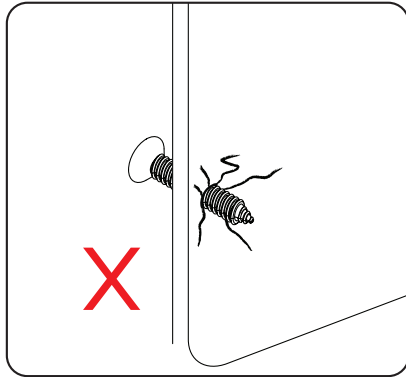


Caution:

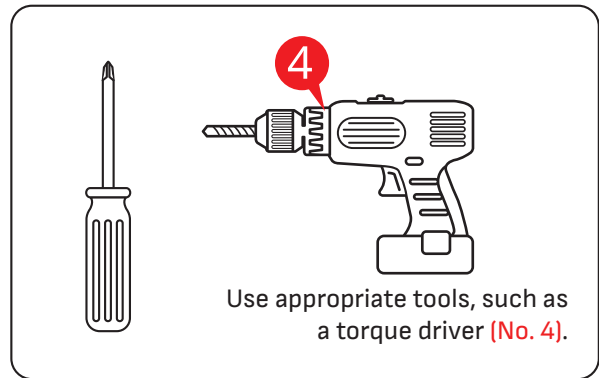
While adjusting the latch, ensure the bumper latch is positioned as shown in the left image. If the bumper latch is positioned as shown in the right image, it may bind against the faceplate and fail to return to its original position.

10. Warnings Before Installation

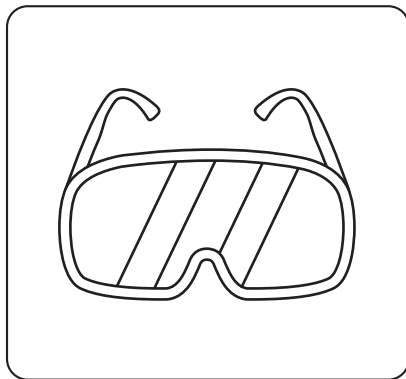
1. Avoid using excessive force to prevent damage to screws and components.



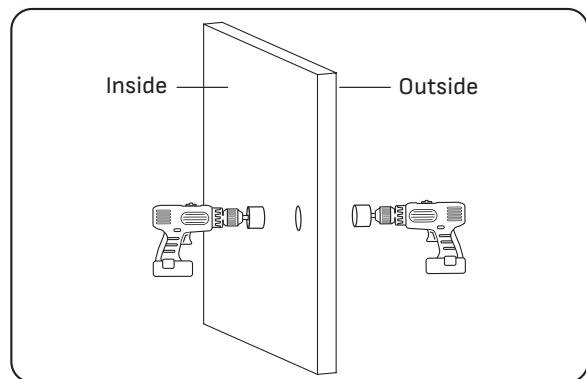
2. Use tools correctly and appropriately.



3. Wear safety glasses to prevent accidents.



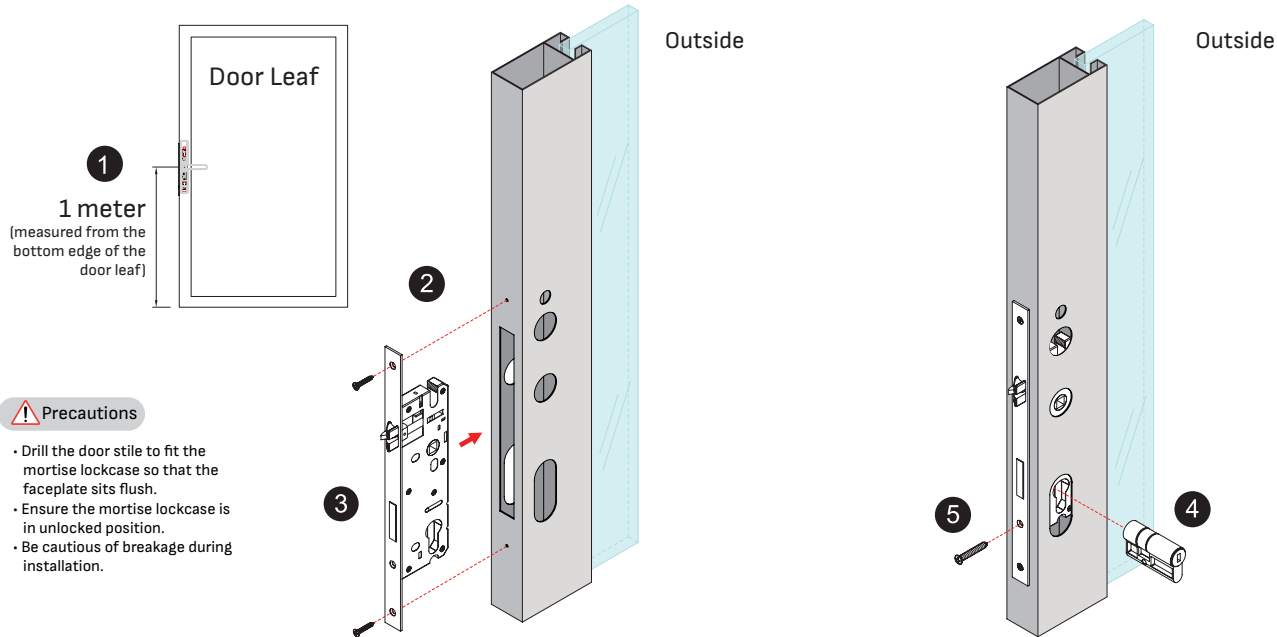
4. Drill holes on both door sides to prevent door damage.



11. Installation Instructions

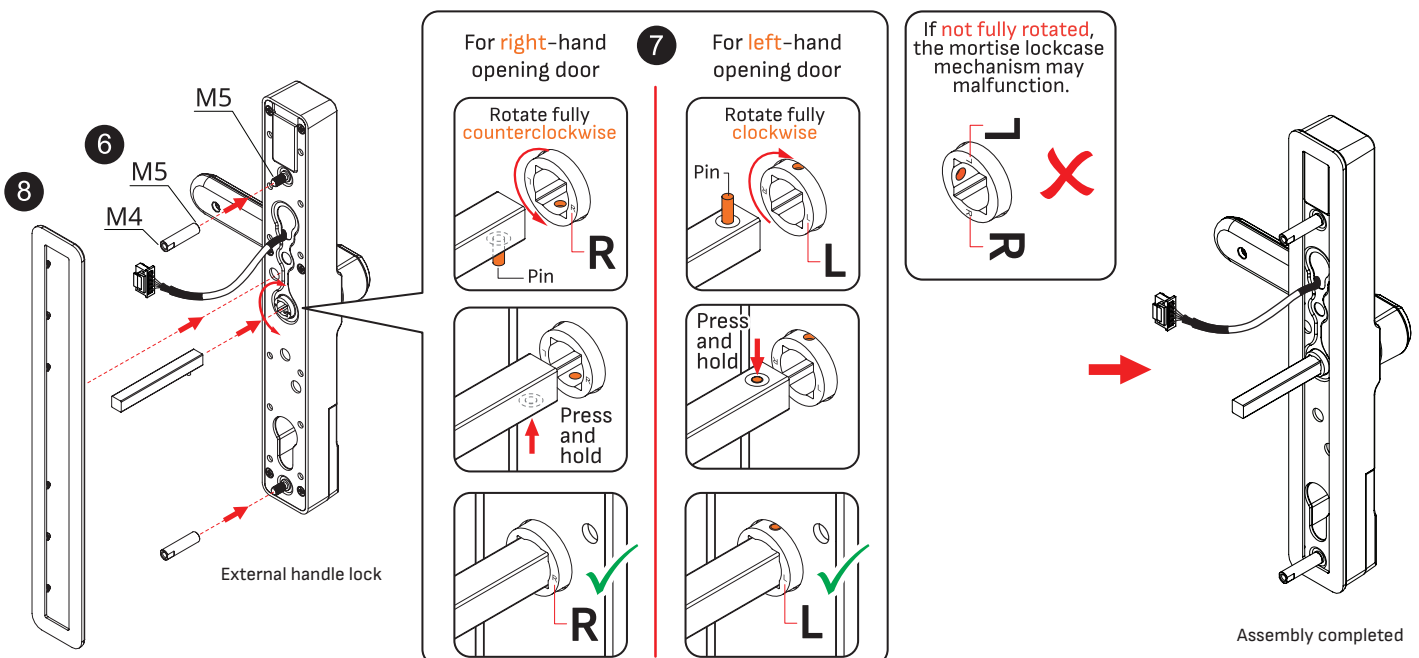
1. Measure the distance from the bottom edge of the door leaf to the center of the spindle hole. Then place the drilling template on the door and drill holes as marked.
2. Embed the mortise lockcase into the door stile.
3. Secure the mortise lockcase firmly with screws.

4. Install the euro profile cylinder into the mortise lockcase.
5. Secure the euro profile cylinder firmly with screw.

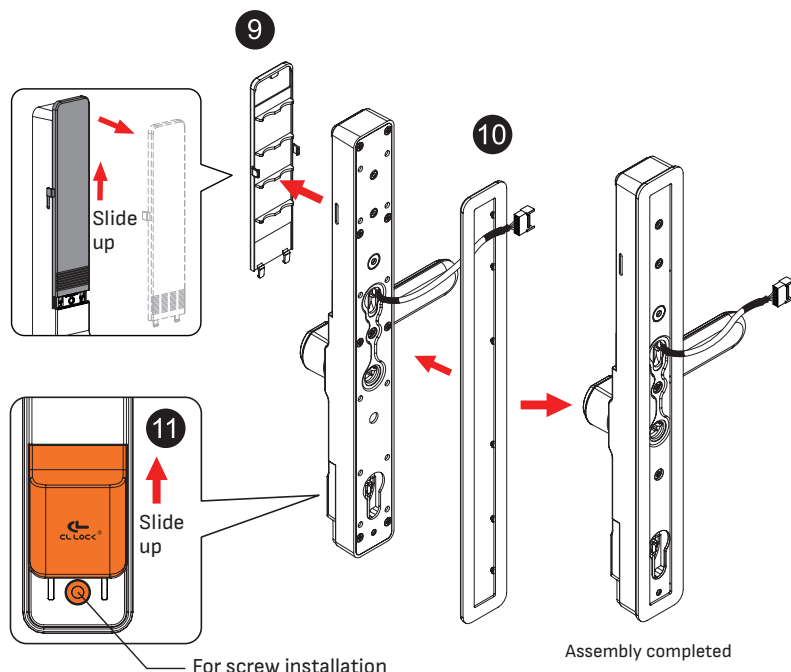


• Assemble the components for the **external handle lock**.

6. Install two M5-M4 threaded connectors. Use the M5 side to securely fasten them to the lock body.
7. Install the spindle. Rotate the spindle slot to align with the door opening direction.
 - For right-hand opening door, install the lock on the left side of the door, rotate the spindle slot counterclockwise until it stops. The pin hole should be at the bottom, with the "R" marking on the right side (see illustration).
 - For left-hand opening door, install the lock on the right side of the door, rotate the spindle slot clockwise until it stops. The pin hole should be at the top, with the "L" marking on the right side (see illustration).
 Then, press and hold the pin on the spindle and insert the spindle until it locks into place. (After installation, ensure the spindle is in the correct position. An incorrect position may cause the mortise lockcase mechanism to malfunction.)
8. Attach the rubber gasket for the external handle lock.



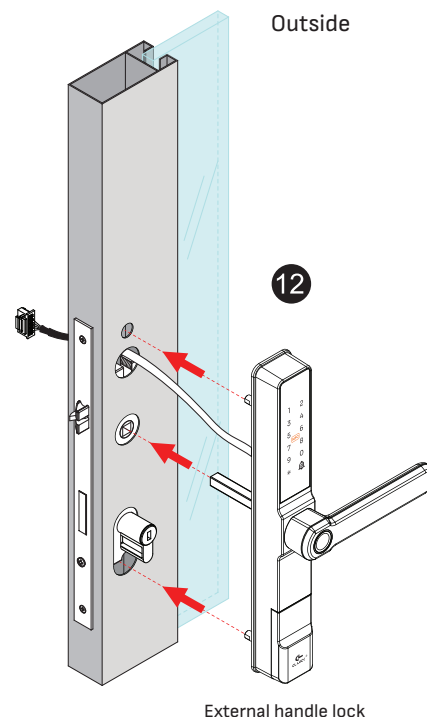
- Assemble the components for the **internal handle Lock**.
- 9. Remove the battery cover by sliding it upward and taking it off.
- 10. Attach the rubber gasket for the internal handle lock to the lock body.
- 11. Slide the internal lock panel up fully to prepare for screw installation.



- Align the exterior handle lock with the door. Pass the wires through the drilled hole as shown, and ensure the spindle is correctly positioned according to step 7. Make sure the spindle is not misaligned.

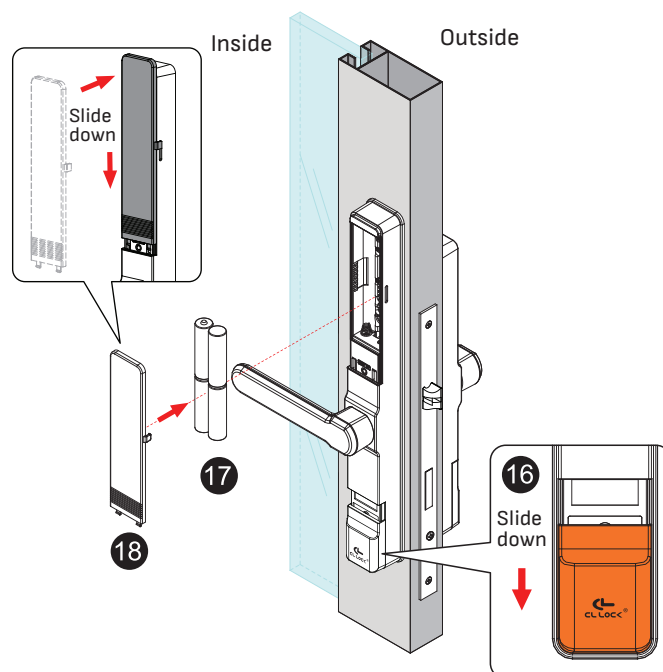
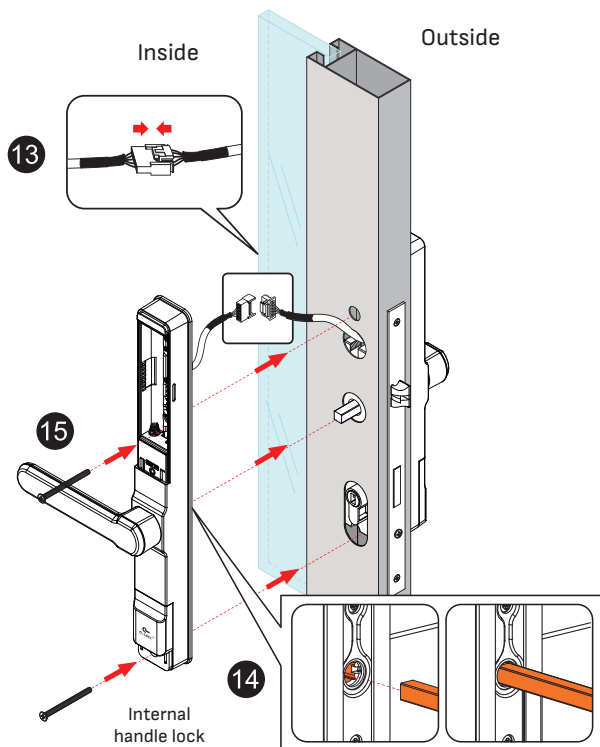
Precaution

Ensure the spindle is correctly positioned; otherwise, the mortise lockcase mechanism may fail.

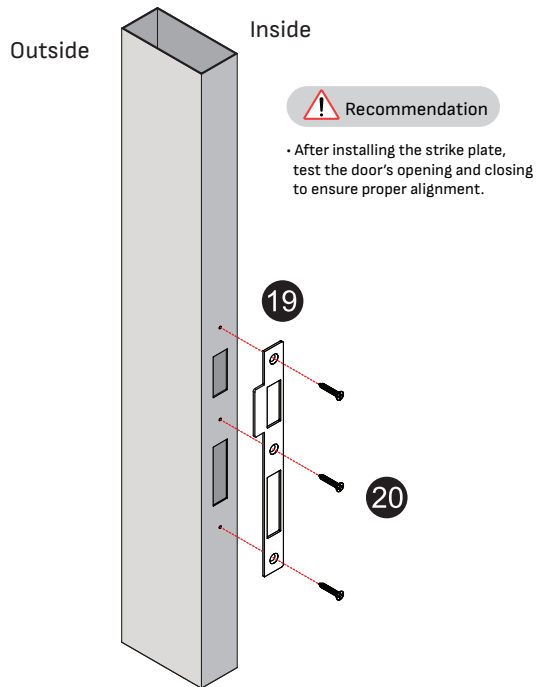


- Connect the wires of the external and internal handle locks by plugging the connectors together securely and neatly arrange the wires.
- Attach the internal handle lock to the door, aligning both the slot and the spindle as shown.
- Tighten the two M4 screws securely. After tightening, test the locking and unlocking with the thumb turn to ensure smooth operation without sticking.

- Slide the internal lock panel down once.
- Insert four AA (1.5V) alkaline batteries.
- Attach the battery cover to the lock and slide it down to secure. Then, check the locking and unlocking using the internal lock panel.



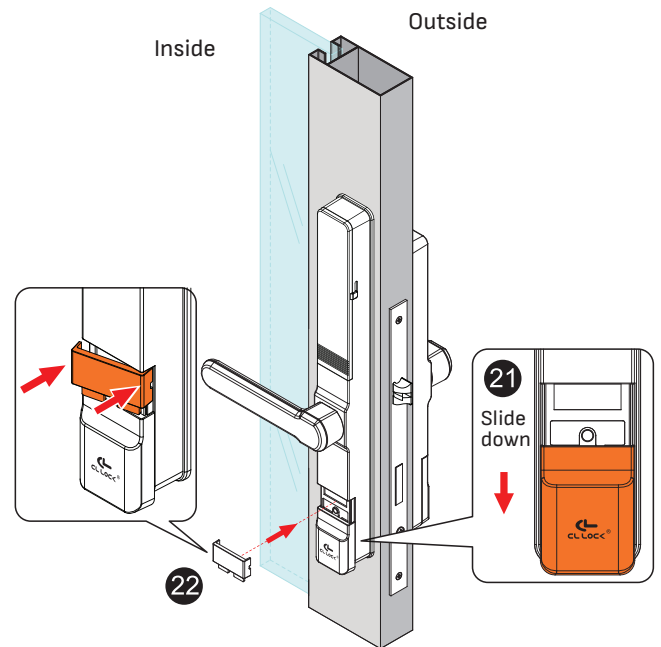
19. Install the strike plate by measuring and drilling into the door frame. Position the strike plate to align with the drilled hole.
20. Tighten the three screws securely and follow the instructions below.



! Recommendation

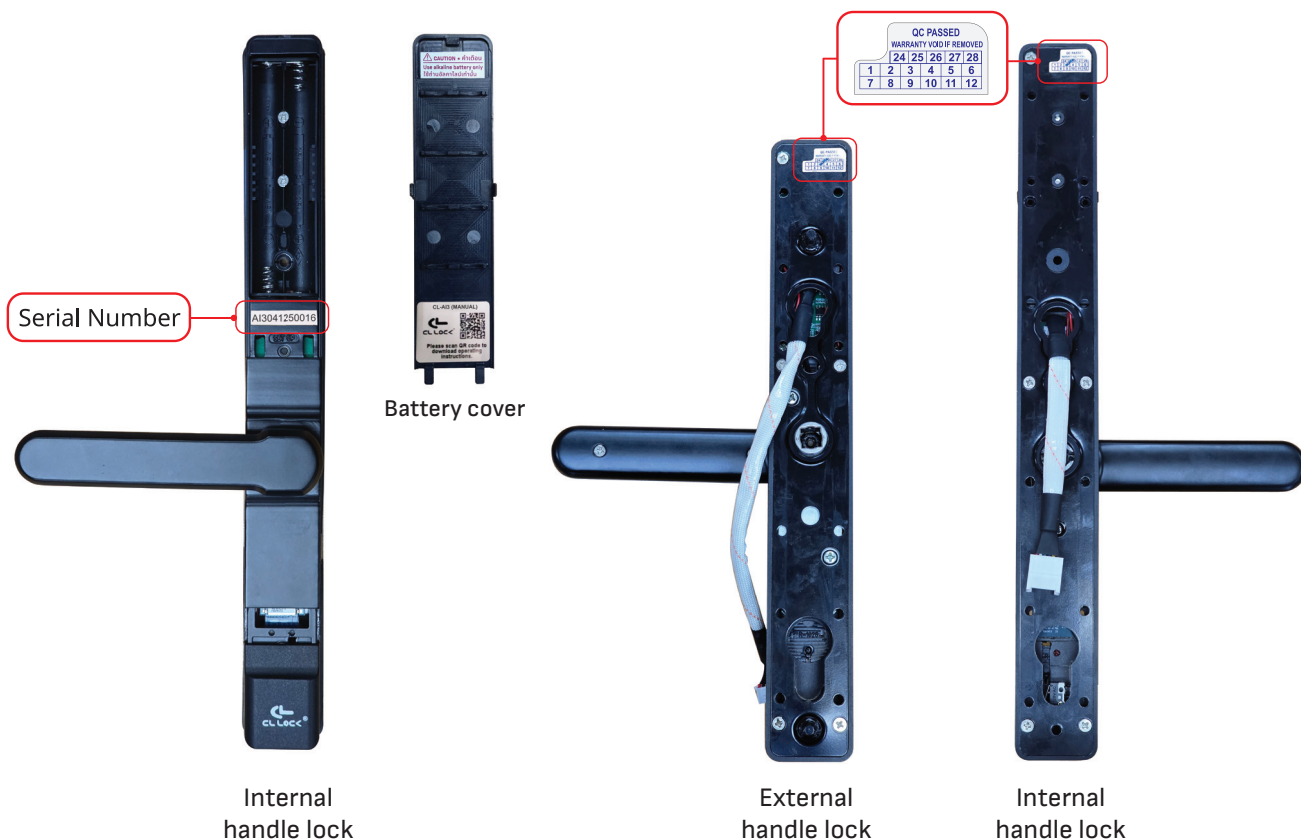
- After installing the lock set and strike plate, test all locking and unlocking functions such as the thumb turn to check for any malfunctions or issues.

21. Slide the internal lock panel all the way down.
 22. Install the post-installation cover plate for the internal handle lock by pressing one side in first, then the other until it clicks into place.
- Then, slide the internal lock panel back to its original position.

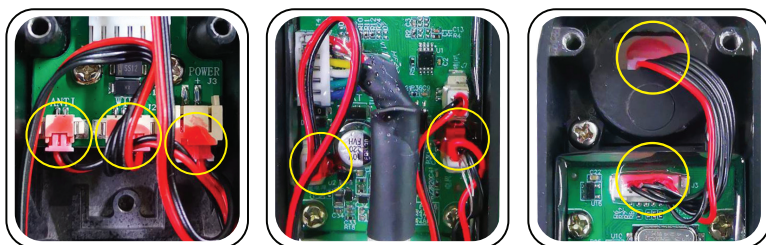


12. Product Warranty Policy

1. The warranty sticker on the product must remain intact, without any tears or detachment (see the attached image).



2. Removing the red-colored connector from the circuit board will immediately void the warranty (see the attached image).



3. Damage such as cracks, breaks, dents, burns, electric shocks, chips, bends, warps, cracks, drops, punctures, water ingress, scratches on the circuit board, or missing parts (e.g., display, main unit, buttons) will immediately void the warranty.
4. Damage caused by accidents, fire, natural disasters such as lightning, flooding, earthquakes, extreme weather conditions, or by insects and animals will immediately void the warranty.
5. Damage resulting from improper use, connecting other devices, incorrect repairs, or modifications, or using incompatible spare parts will immediately void the warranty.
6. Products with abnormal conditions that should not occur on their own, or those stored improperly (e.g., glue stains, oxidation, water stains, animal droppings, rust, broken circuit board traces) will immediately void the warranty.
7. The company reserves the right to refuse product returns if the customer is dissatisfied, but the product has already been unboxed or used.
8. The company reserves the right to modify or change the warranty terms without prior notice.

13. Safety Manual and Precautions

1. Do not bring alkaline batteries near a heat source or fire to prevent the risk of explosion.
2. Please avoid disassembling the product to prevent damage.
3. Do not scratch the fingerprint scanner with sharp objects as it may cause permanent damage.
4. Do not leave the product in areas where water leaks or splashes may occur.
5. Do not connect the device to household wiring.
6. For cleaning, please wipe with a soft cloth.
7. Do not remove the battery during the setup process.
8. After receiving a low battery warning, please replace the battery immediately.
9. Do not use rechargeable batteries as they may cause excessive voltage, potentially damaging the device's system.

14. Additional Information

1. When the battery drops below 4.8 – 5 volts, a notification will prompt you to replace the battery. If the battery drops below 4.2 volts, the key will automatically shut off.
2. To set the time, enter the year, month, day, and time. Please connect with the application for synchronization.
3. During setup, if no action is taken, the system will automatically exit within 10 seconds.

