



User Manual

Digital Aluminium Door Lock

No. **CL-AI3**



Please scan the QR code
to download Installation

Table of Contents

General Product Information

1. Components of the Digital Door Lock	1
2. Technical Parameters	1
3. Accessories of the Digital Door Lock	2
4. Additional Accessories for Door Thickness	3
5. Dimensions of the Digital Door Lock	4
6. Product Information	5

Functionality of CL-AI3

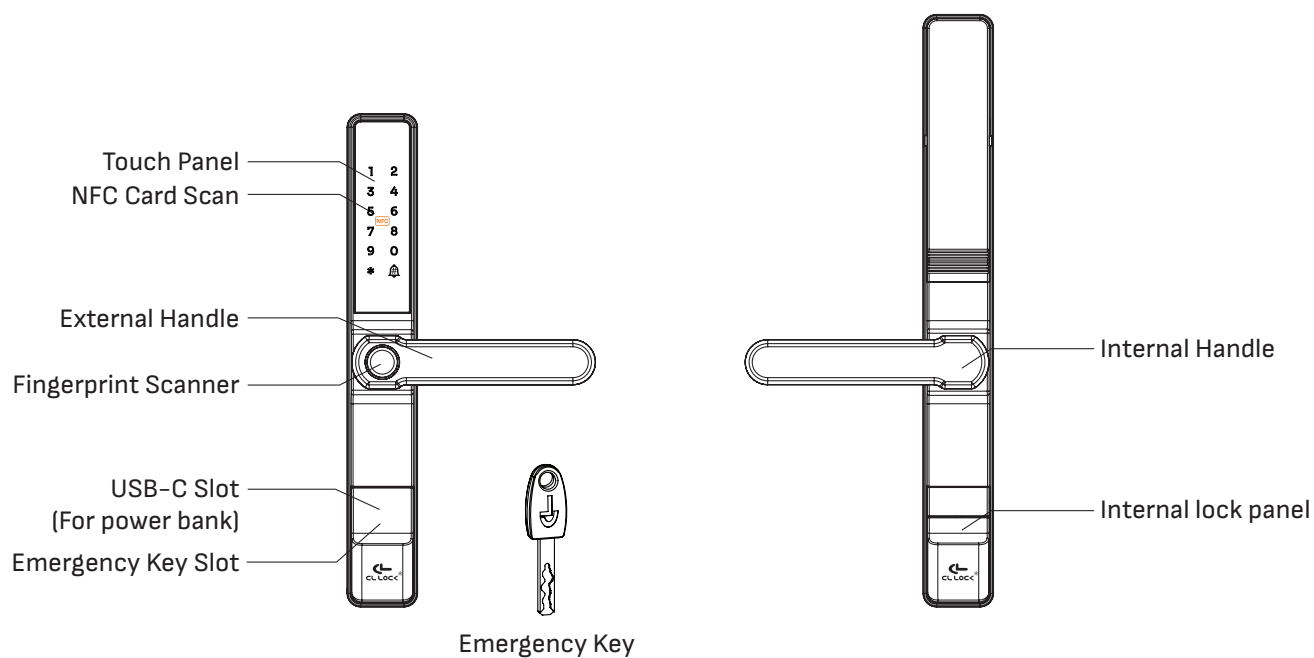
7. Functions and Usage	7
8. Factory Status	8
9. How to Perform a Factory Reset	8
10. Lock / Unlock from the Inside	9
10.1 Locking with the Handle	9
10.2 Unlocking with the Handle	10
10.3 Locking from the Internal lock	11
11. Lock / Unlock from the Outside	12
12. Setup Instructions	14

User Management

13. Administrator Management	16
13.1 Add Administrator	16
13.2 Delete Administrator	17

User Settings	18
14. User Settings	19
14.1 Add User	19
14.2 Delete User	20
14.3 Delete All User	21
System Settings	22
15. System Settings	23
15.1 Time Setting	23
15.2 Volume Adjustment	24
15.3 Normally Open	25
15.4 Double Verification	26
15.5 Record Info	27
Remote Management	28
16. Network Setting	29
17. Code for Changing Languages	31
18. USB-C Port Usage	32
19. Unlocking with The Emergency Key	33
20. Locking with The Emergency Key	37
21. Product Warranty Policy	38
22. Safety Manual and Precautions	39
23. Additional Information	39

1. Components of the Digital Door Lock

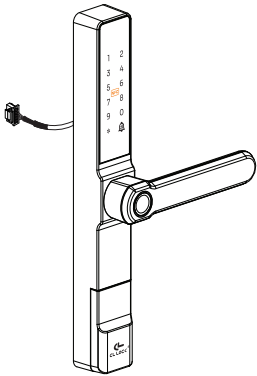


2. Technical Parameters

Administrator:	10 ID (No. 001–010)
User:	290 ID (No. 011–300)
Ways to Unlock:	Password, Fingerprint, NFC card, Emergency key, Application.
Network:	Wi-Fi 2.4 G
Power:	4 Pieces of AA alkaline battery
Low Battery Warning:	4.8–5 V
Emergency Power Supply:	USB type-C
Password Length:	6–10 digits (fake password can be up to 29 digits.)
Product Dimensions:	Internal <ul style="list-style-type: none"> • Excludes handle 36 × 325 × 25.5 mm • Includes handle 136 × 325 × 53.4 mm External <ul style="list-style-type: none"> • Excludes handle 36 × 270 × 25.5 mm • Includes handle 136 × 270 × 54.1 mm

3. Accessories of the Digital Door Lock

1



External handle lock (1 set)

2



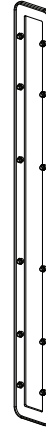
Rubber gasket for external handle lock (1 pc.)

3



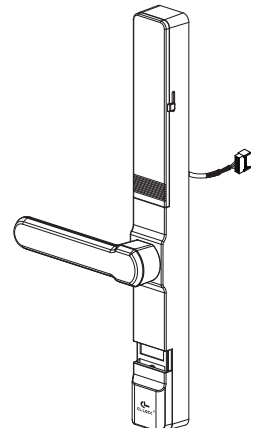
Mortise lockcase for sliding or swing door (1 set)

4



Rubber gasket for internal handle lock (1 pc.)

5



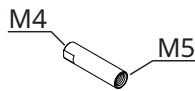
Internal handle lock (1 set)

6



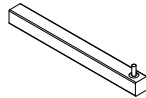
Screw M4x52 mm (2 pcs.)

7



M5-M4 threaded connector Length: 25 mm (2 pcs.)

8



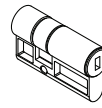
Spindle Length: 80 mm (1 pc.)

9



Emergency key (2 pcs.)

10



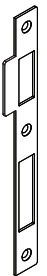
Euro profile cylinder key set (1 set)

11



Screw for euro profile cylinder, size M5x35, M5x38, M5x45 or M5x64 mm (1 pc.)

12



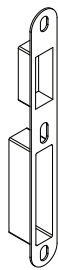
Strike plate (1 pc.)

13



M4 x 25 mm screw for mortise lock (2 pcs.) and for strike plate (3 pcs.)

14



Strike box (1 pc.)

15



Post-installation cover plate (1 pc.)


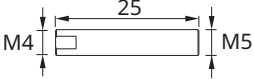
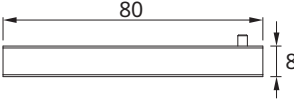
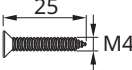
16



NFC card (2 pcs.)

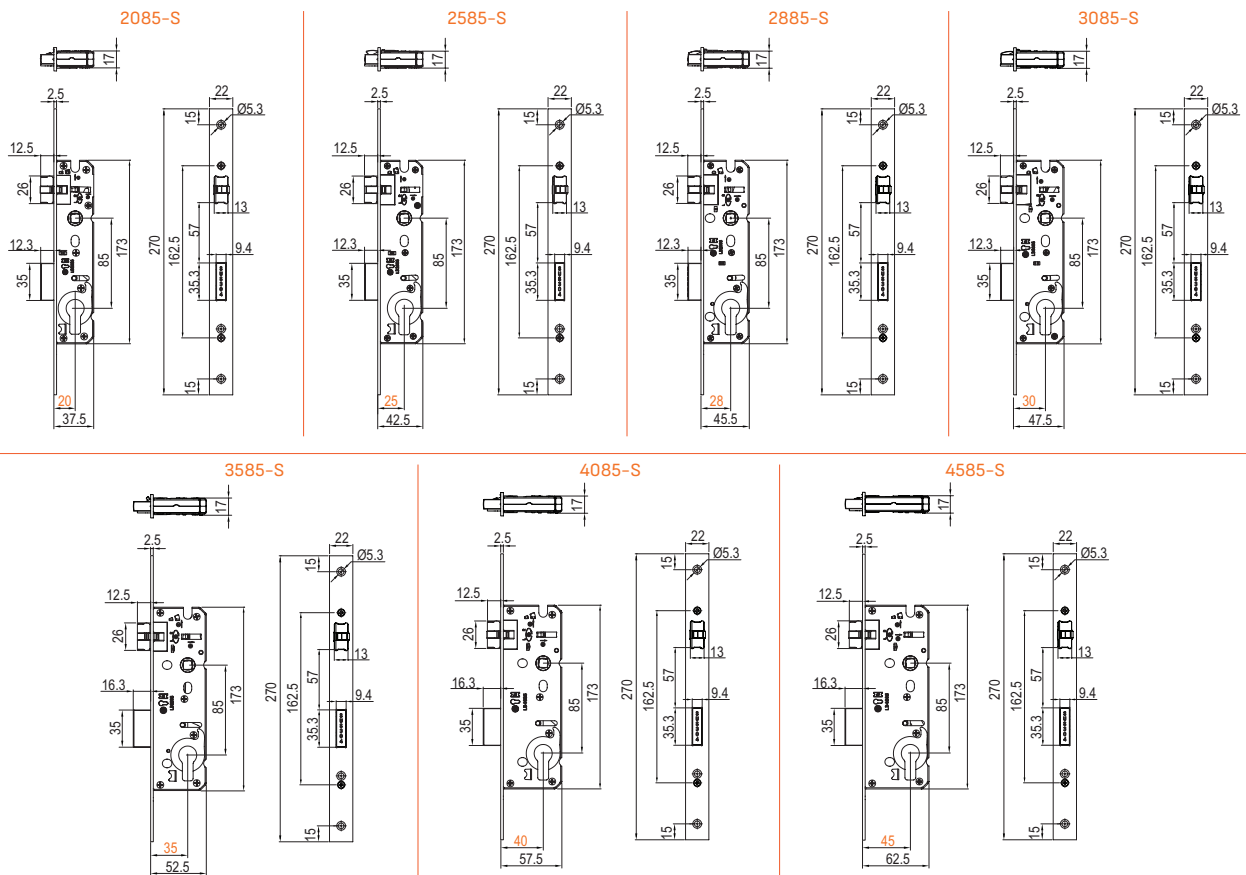
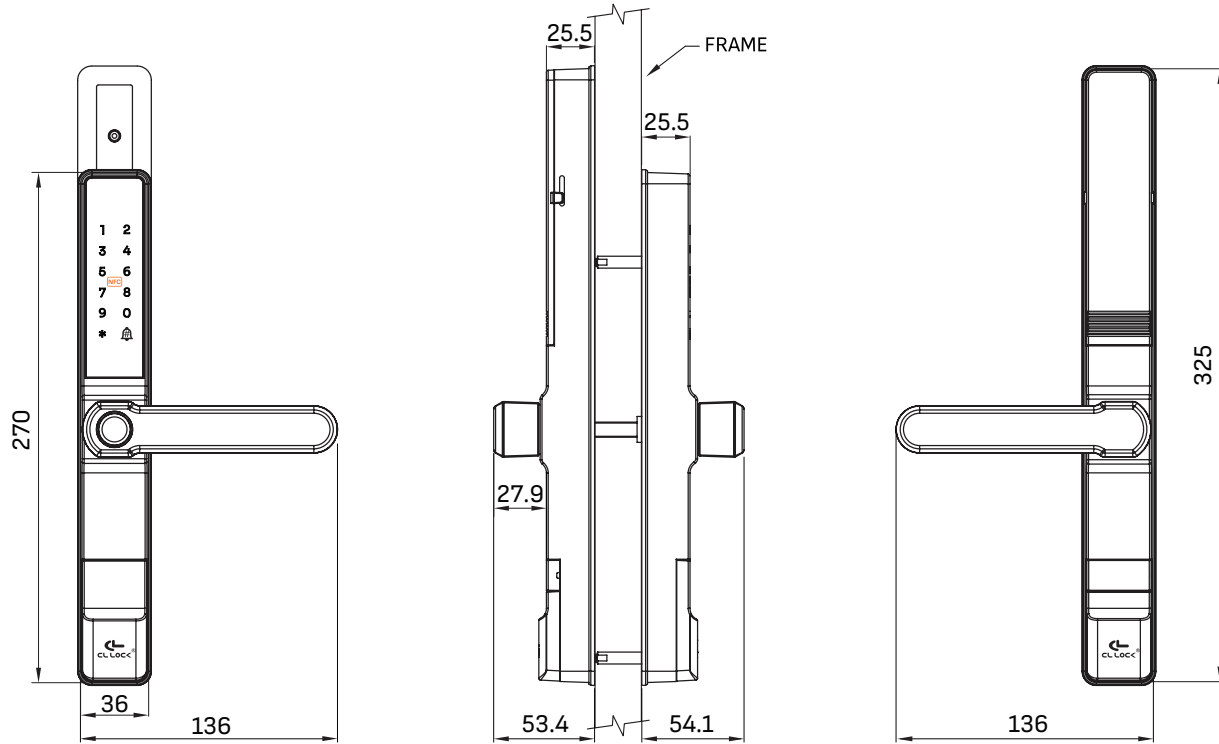
4. Additional Accessories for Door Thickness

Door thickness: 26–55 mm. If the door thickness falls outside this range, please contact us for more information. Please select the appropriate accessories based on the door thickness.

No	Details	Specification (mm)	Quantity
6	Screw M4×52 mm		2
7	M5–M4 threaded connector Length: 25 mm		2
8	Spindle Length: 80 mm		1
13	Screw M4×25 mm		5

5. Dimensions of the Digital Door Lock

Unit: Millimeters





6. Product Information

1. Fingerprint registration requires scanning the finger 6 times for complete registration.
2. Card registration and usage should be within a distance of 0–30 mm for accurate registration and functionality.
3. Entering the wrong password more than 5 times will trigger an alert, and the lock will remain locked for 180 seconds. (Registered fingerprints and NFC cards can still be used normally.)
4. A fake password can be up to 29 digits long.
5. If the battery is low, the application cannot be connected.
6. To check the software version, press 99#.
7. The first registered admin cannot be deleted.
8. To repeat instructions, press 0. To go back, press *.

Functionality

No. **CL-AI3**



7. Functions and Usage

1. Definition of Terms

1.1 Admin: Refers to the system administrator or homeowner.

1.2 User: Refers to other users or residents.

2. Unlocking from Outside

2.1 Unlock using fingerprint, password, NFC card, mobile application, or emergency key. Operate together with the mechanical mechanism by pushing the handle downward to unlock. (see section 11 page 12-13).

3. Unlocking from Inside

3.1 Unlock by pushing the handle downward (see section 10.2, page 10).

4. Locking from Inside

4.1 Lock by pushing the handle upward (see section 10.1, page 9).

4.2 For internal lock systems, slide the internal lock panel all the way down. (this prevents regular users from unlocking operation; refer to section 10.3, page 11).

5. Locking from Outside

5.1 Lock by pushing the handle upward (see section 11, page 12).

6. Button Functions

6.1 Press *: To go back.

6.2 Press #: To confirm/accept.

7. Touch Activation Touching the screen will activate the system and wake it up for operation.

8. Configuration Instructions While configuring any function, do not allow the screen light to turn off. If it does, restart the configuration process.

9. Confirmation After Configuration

After successfully completing the configuration, press * to return, or wait for the system to exit automatically.

8.Factory Status

In factory status, before registration fingerprint or NFC card can be used to unlock at any time.

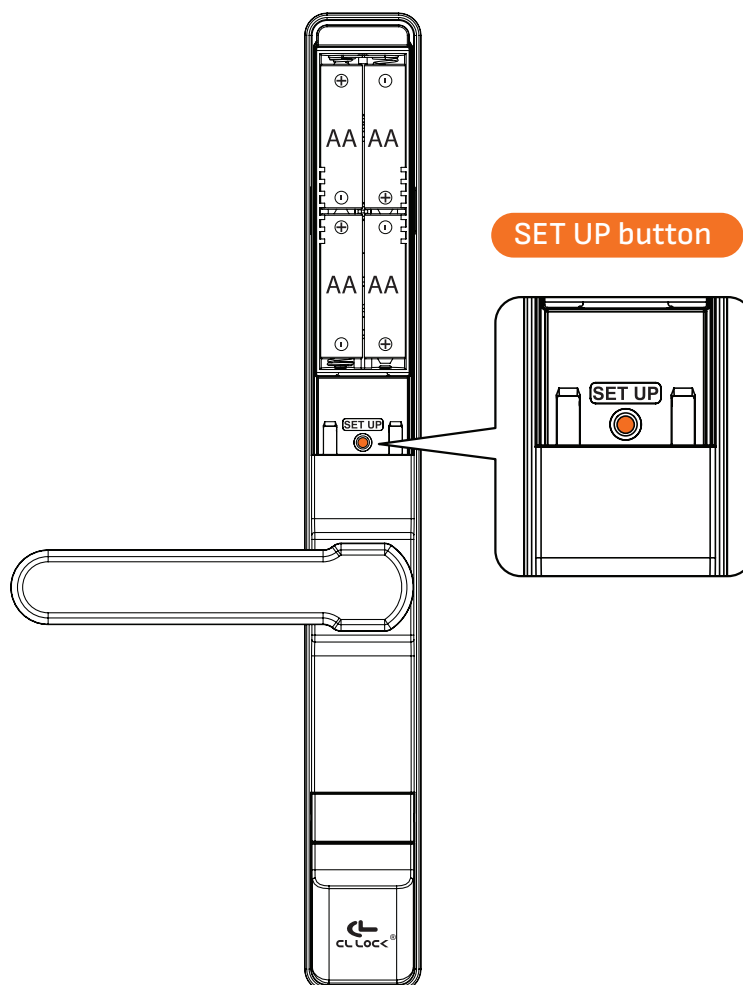
9.How to Perform a Factory Reset

To perform a factory reset, press the SET UP button located inside the internal handle lock beneath the battery compartment.

Instructions:

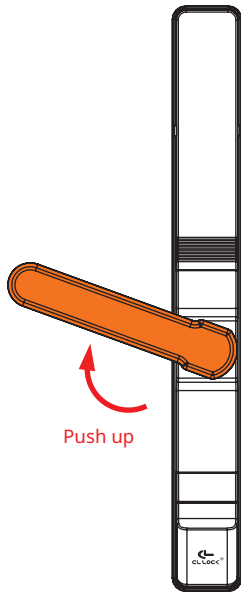
- 1.Remove the battery cover.
- 2.Tap the touch panel to wake up the device.
3. Press and hold the SET UP button using a pointed tool for 5 seconds.

The system will then perform a factory reset.

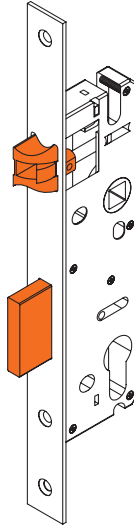


10.Lock / Unlock from the Inside

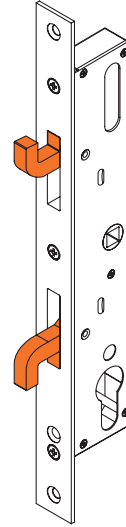
10.1 Locking with the Handle



Lockcase for
Swing Door



Lockcase for
Sliding Door

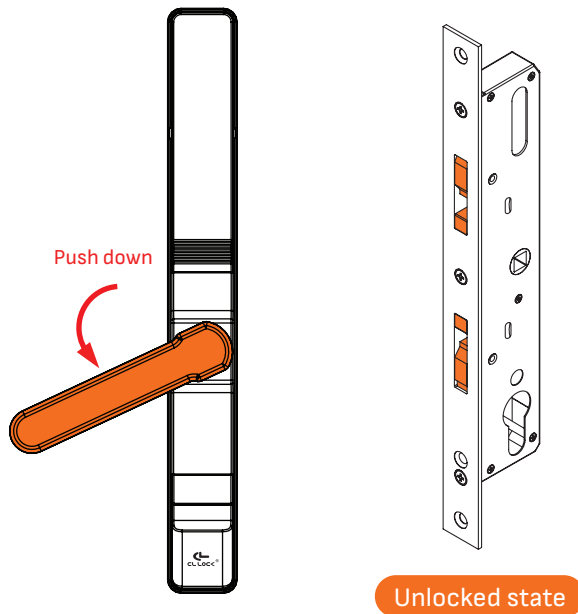


Locked state

- Push the handle upwards; to set the latch in the **locked position**.

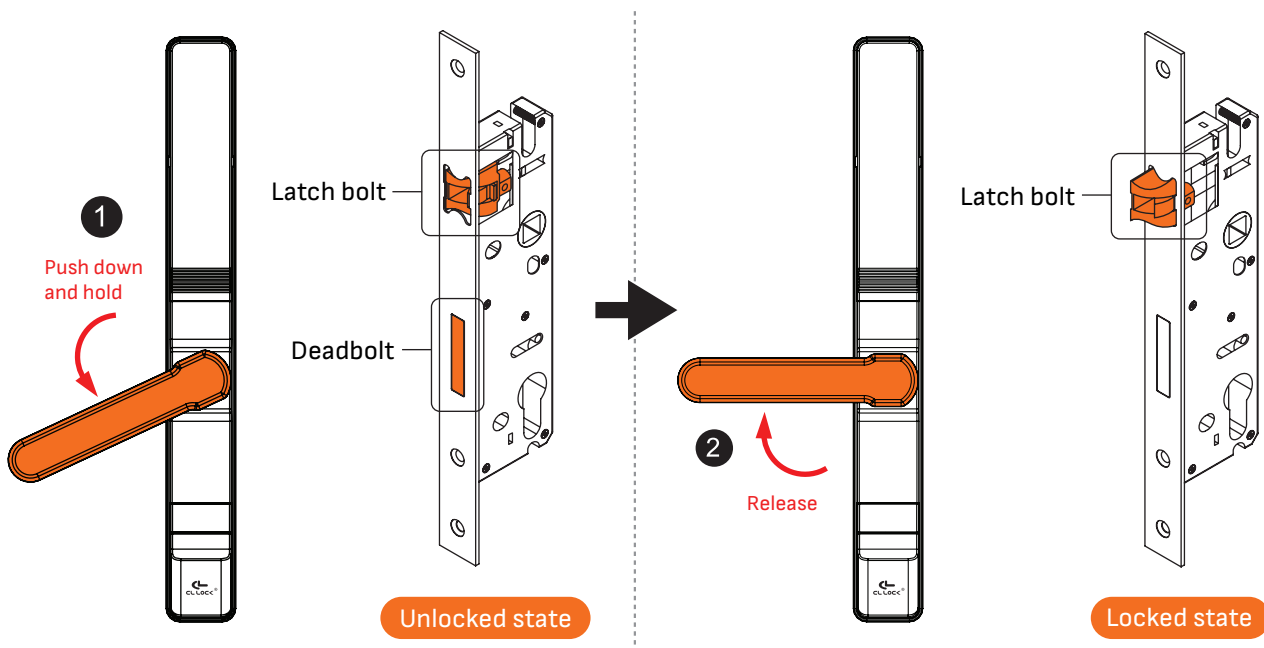
10.2 Unlocking with the Handle

Lockcase for Sliding Door



- Push the handle downwards; to set the latch in the **unlocked position**.

Lockcase for Swing Door



1. Push the handle downward and hold it, the latch bolt and deadbolt retract, entering the **unlocked position** and allowing the door to be opened.
2. Release the handle to return to its original position (automatically), the latch bolt extends, entering the **locked position**.

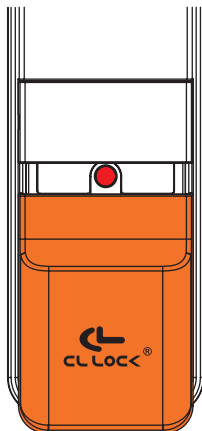
10.3 Locking from the internal lock

Unlocked state



When the lock is in unlocked position (as shown in the illustration), both the administrator and regular users can enter and exit normally according to the registration method.

Locked state



Slide
down

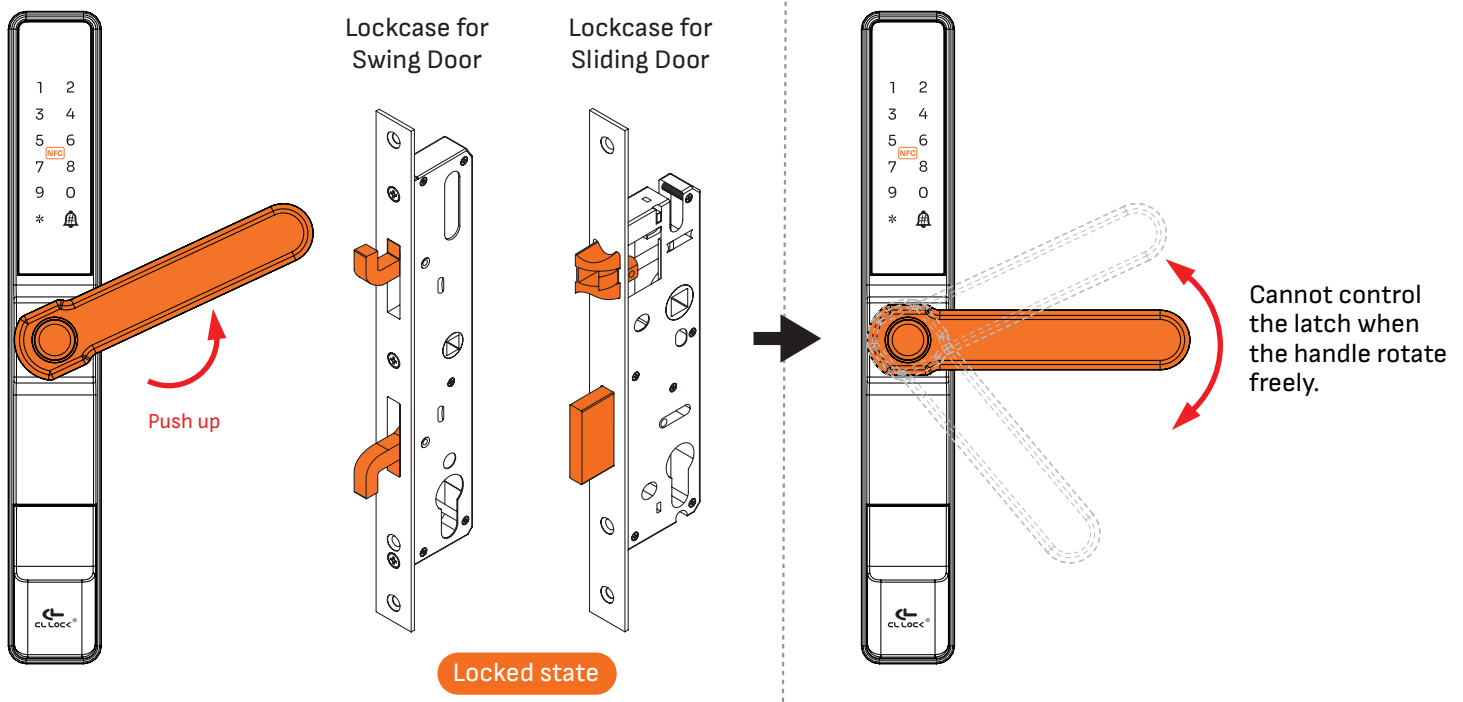


When the internal lock slides downward (as shown in the illustration), the system will lock from the inside.

The administrator can enter and exit normally, but regular users will not be able to enter.

11.Lock / Unlock from the Outside

Locking with the Handle

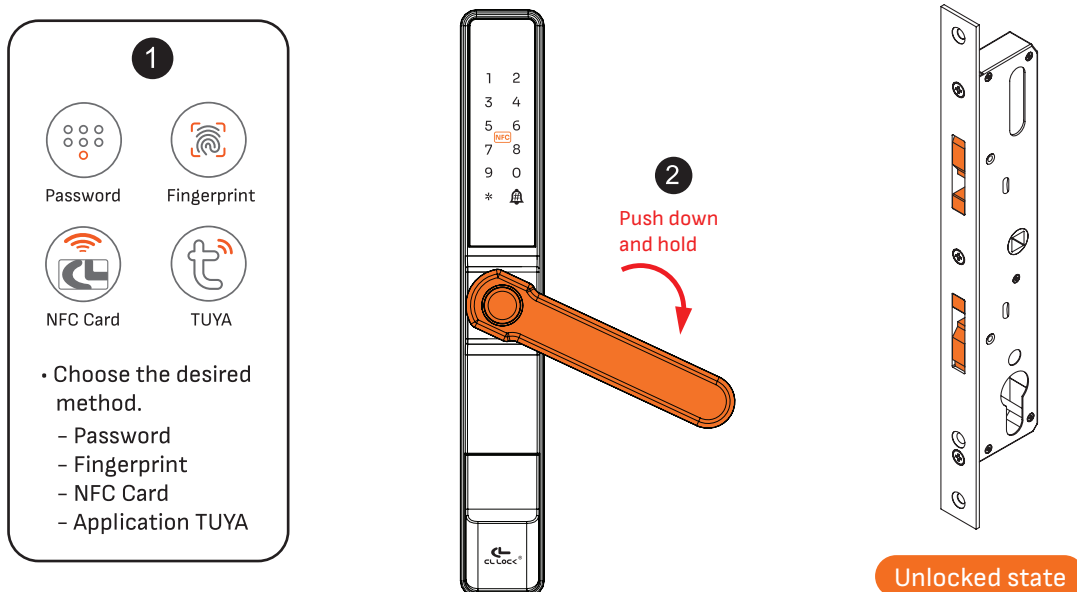


Push the handle upwards to set the latch in the **locked position**.

(When the lock is in locked position, the external handle will rotate freely and cannot control the latch sets to lock or unlock.)

Unlocking from the Outside

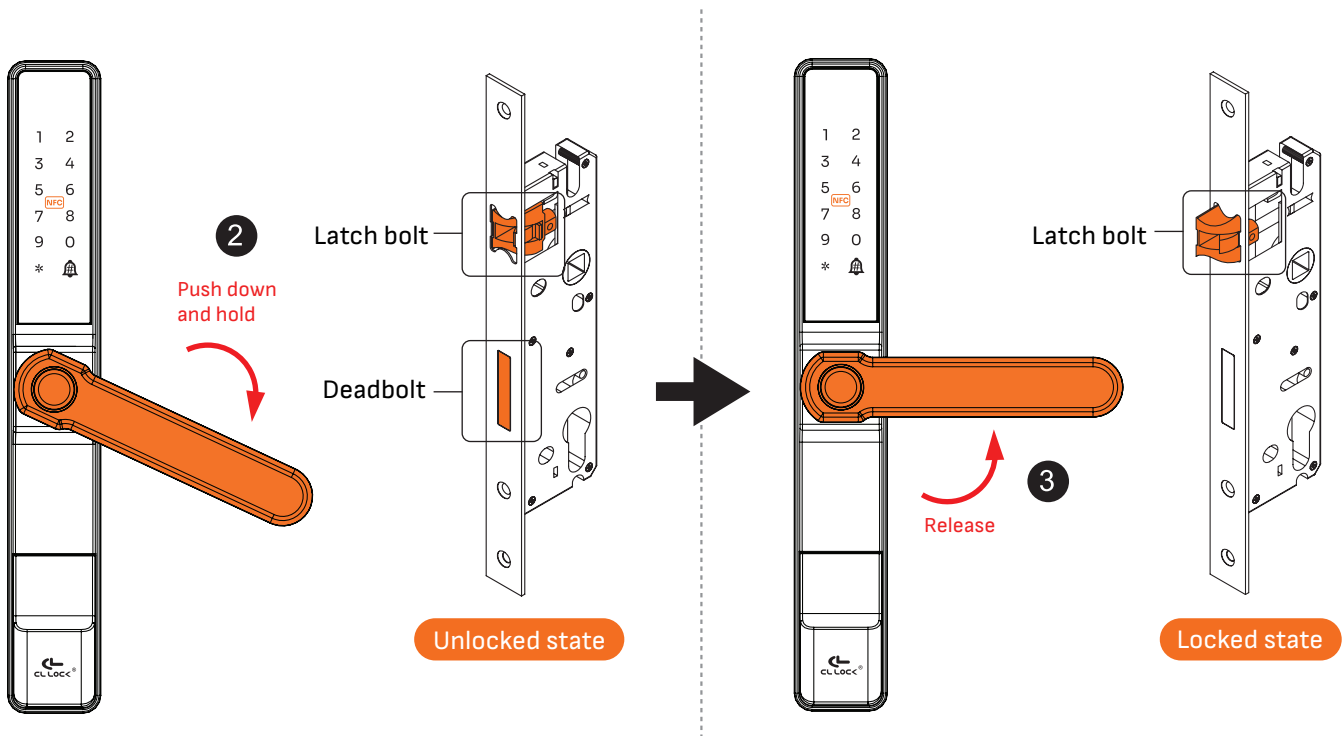
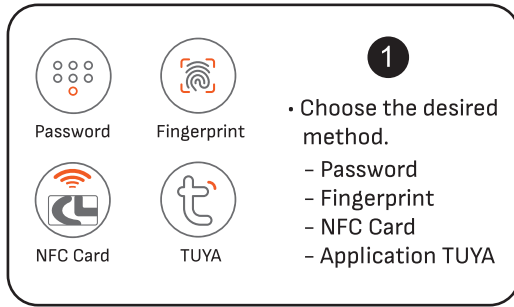
Lockcase for Sliding Door



1. Unlocking using a registered password, fingerprint, NFC card, or mobile application.

2. Push the handle downward and hold it, the latch bolt and deadbolt retract, entering the **unlocked position** and allowing the door to be opened.

Lockcase for Swing Door



1. Unlocking a registered password, fingerprint, NFC card, or mobile application.
2. Push the handle downward and hold it, the latch bolt and deadbolt retract, entering the **unlocked position** and allowing the door to be opened.
3. Release the handle to return to its original position (automatically), the latch bolt extends, entering the **locked position**.

12. Setup Instructions

Setup Instructions Enter Setup mode : Press * and #, the enter the administrator password (factory default is 123456#).

1. Administrator management

- 1.1 Add Administrator
 - Add Administrator — Enroll password, Fingerprint or NFC cards
 - Delete Administrator — Enter the ID user and press #

2. User management

- 2.1 Add User
 - Add User — Enroll password, Fingerprint or NFC cards
 - Delete User
 - Enter the ID user and press #
 - Delete All

3. System Setting

- 3.1 Time Setting — Enter year/Month/Date and Time
- 3.2 Volume Adjustment
 - Volume Low
 - Volume Medium
 - Volume High
 - Mute
- 3.3 Normally Open
 - Start normally open mode
 - Close normally open mode
- 3.4 Double Verification
 - Open double Verification mode
 - Close double Verification mode
- 3.5 Record Info

4. Network Setting

- ON
- OFF



Settings Video

Functions	Capacity
Fingerprint	100 ID
Password	200 ID
NFC Card	(Combined)
Total Capacity	300 ID

User Management

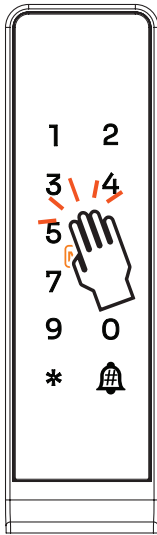
No. **CL-AI3**



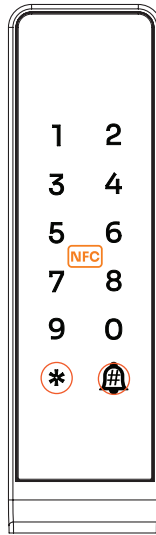


13. Administrator Management

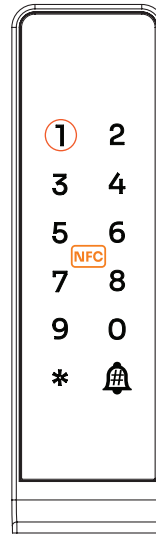
13.1 Add Administrator



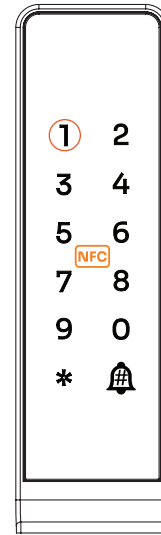
Touch the screen to
light up



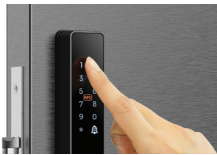
Press *
followed by #



Press 1
Administrator
Management



Press 1
Add Administrator



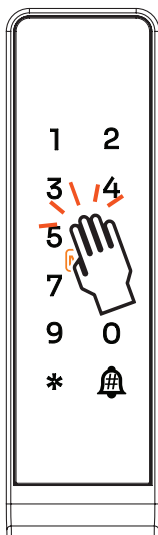
Select your desired option:



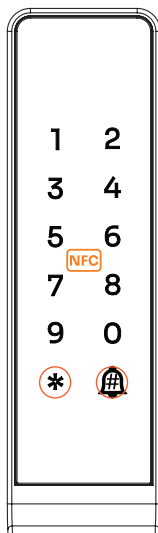
- Enter a password of 6-10 digits and press #
- Scan the NFC card
- Scan your fingerprint 6 times

- After registering the first admin, the factory code will change to "Admin."
- When registering a password, it must be entered twice to confirm the password.
- It is recommended to register the password first.
- When registering and using the NFC card, ensure the distance is between 0 - 30 millimeters for proper registration and usage.

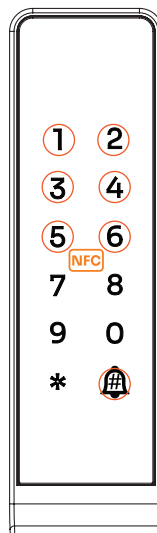
13.2 Delete Administrator



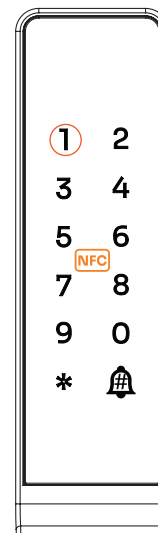
Touch the screen to
light up



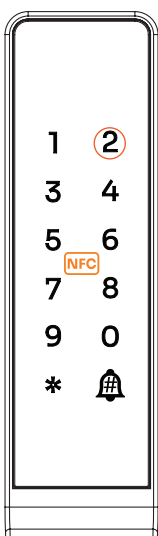
Press *
followed by #



Administrator
identity verification
Choose only one
method:
- Enter a password
and press #
- Scan the NFC card
- Scan fingerprint



Press 1
Administrator
Management



Press 2
Delete Administrator

Enter the user ID (1 digit No. 1-9)
and press #

• No. 0 cannot be deleted (in case of deletion, factory reset is required).

User Settings

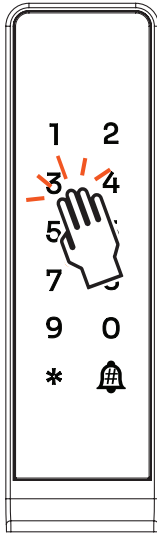
No. **CL-AI3**



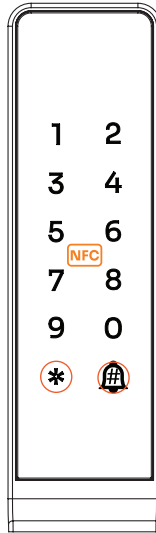


14. User Settings

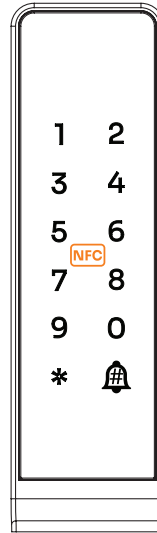
14.1 Add User



Touch the screen to light up

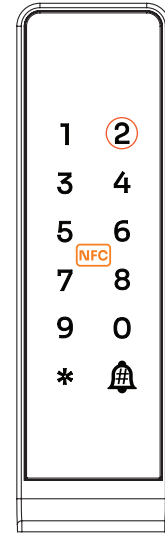


Press * followed by #

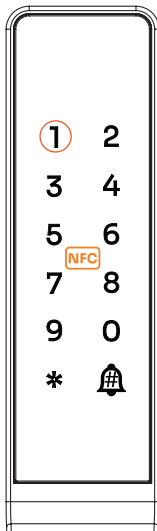


Administrator identity verification
Choose only one method:

- Enter a password and press #
- Scan the NFC card
- Scan fingerprint



Press 2
User Management



Press 1
Add User

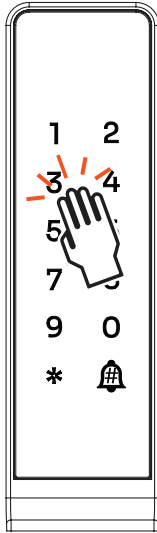


Select your desired option:

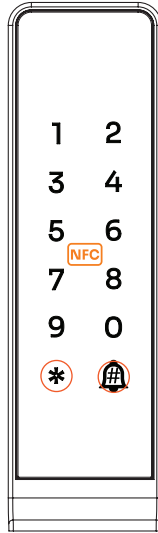
- Enter a password of 6-10 digits and press #
- Scan the NFC card
- Scan your fingerprint 6 times

- When registering a password, it must be entered twice to confirm the password.
- When registering and using the NFC card, ensure the distance is between 0 - 30 millimeters for proper registration and usage.

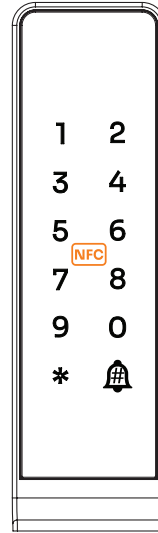
14.2 Delete User



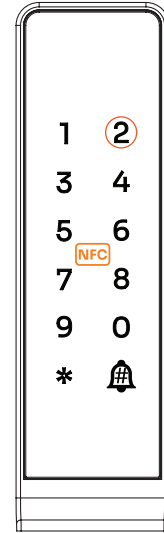
Touch the screen to
light up



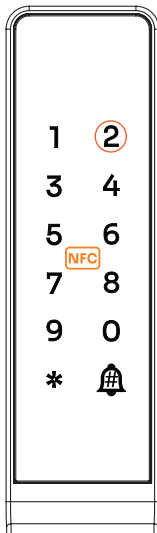
Press *
followed by #



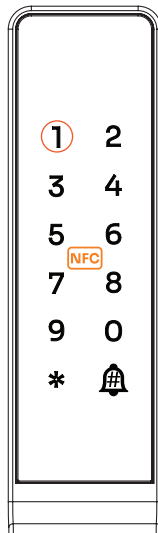
Administrator
identity verification
Choose only one
method:
- Enter a password
and press #
- Scan the NFC card
- Scan fingerprint



Press 2
User Management



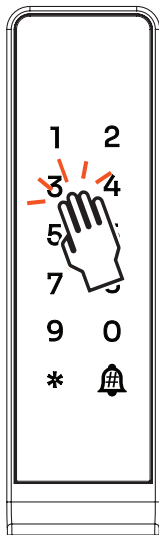
Press 2
Delete Management



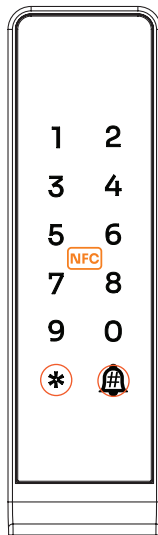
Press 1
Delete by number

Enter the user ID
(2-3 digits) and press #

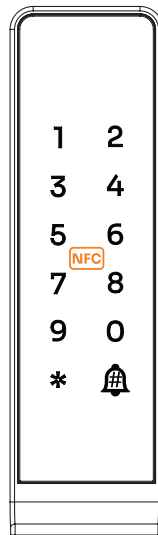
14.3 Delete All Users



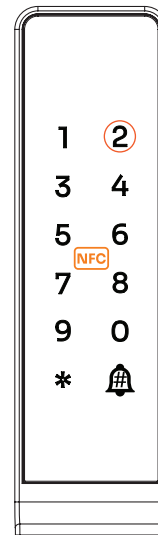
Touch the screen to
light up



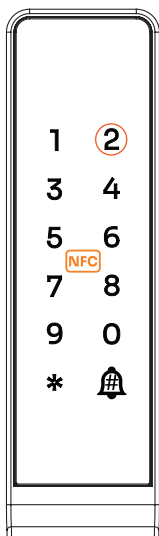
Press *
followed by #



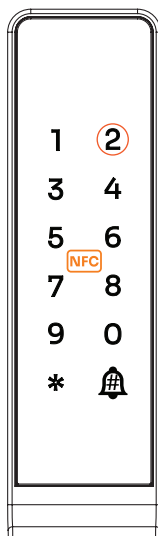
Administrator
identity verification
Choose only one
method:
- Enter a password
and press #
- Scan the NFC card
- Scan fingerprint



Press 2
User Management



Press 2
Delete user



Press 2
Delete all user

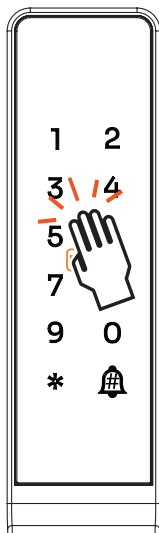
System Settings

No. **CL-AI3**

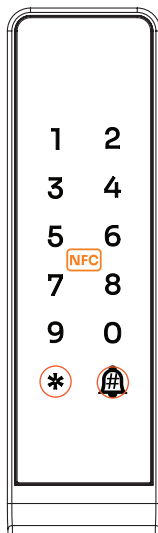


15. System Settings

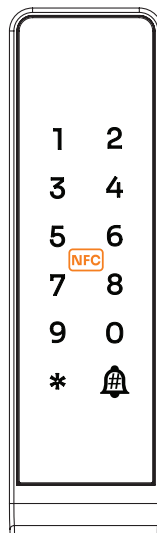
15.1 Time Setting



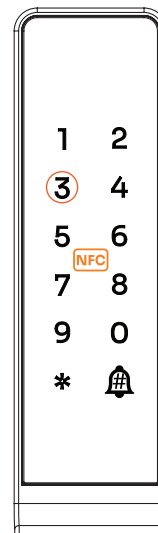
Touch the screen to
light up



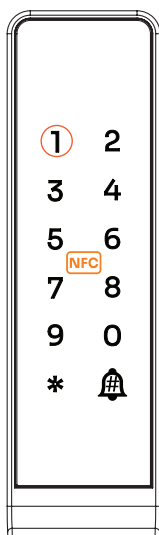
Press *
followed by #



Administrator
identity verification
Choose only one
method:
- Enter a password
and press #
- Scan the NFC card
- Scan fingerprint



Press 3
System Settings



Press 1
Time setting

Enter year as a 4-digit number.
Enter month as a 2-digit number.
Enter day as a 2-digit number.

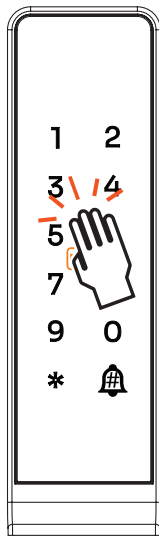


Enter time:
Hour as a 2-digit number.
Minute as a 2-digit number.

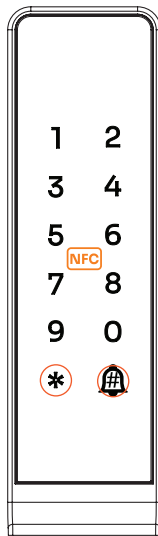
Then, the system will review the year-month-day and hour-minute.
After that, press #."

- If connected to the application, the date and time will be set automatically.
- Enter the year in AD only

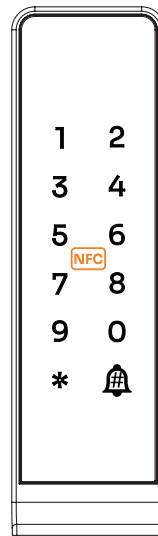
15.2 Volume Adjustment



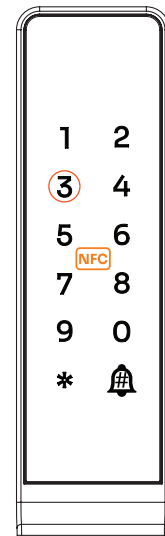
Touch the screen to
light up



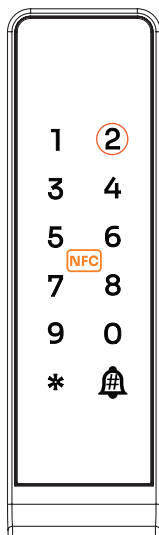
Press *
followed by #



Administrator
identity verification
Choose only one
method:
- Enter a password
and press #
- Scan the NFC card
- Scan fingerprint



Press 3
System Settings

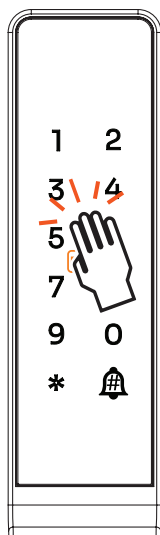


Press 2
Volume Adjustment

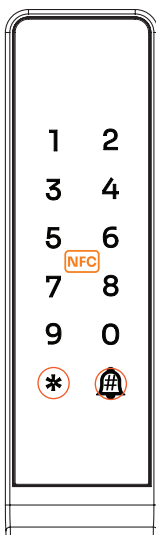


Select your desired option:
Press 1 for low volume.
Press 2 for medium volume.
Press 3 for high volume.
Press 4 to mute.

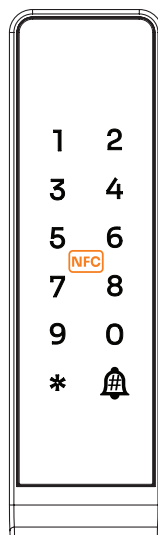
15.3 Normally Open



Touch the screen to light up

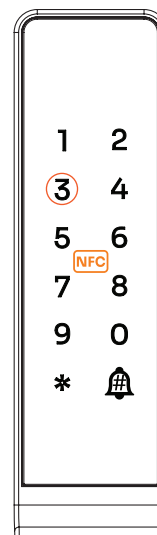


Press * followed by #

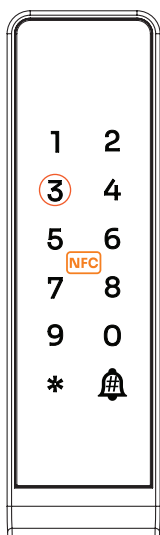


Administrator identity verification
Choose only one method:

- Enter a password and press #
- Scan the NFC card
- Scan fingerprint



Press 3
System Settings



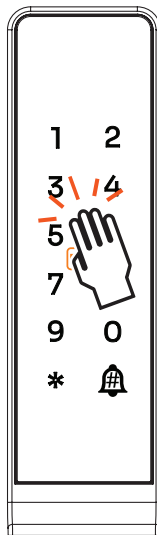
Press 3
Normally Open



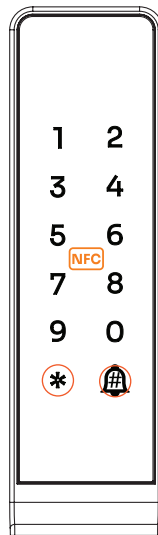
Select your desired option:
Press 1 to turn on.
Press 2 to turn off.

- Unlock once first and ensure the always-on mode is activated before proceeding.

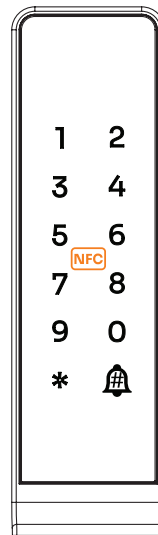
15.4 Double Verification



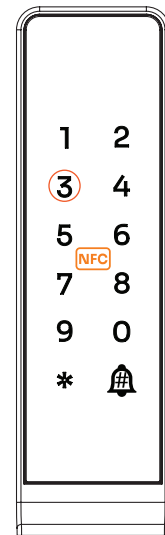
Touch the screen to
light up



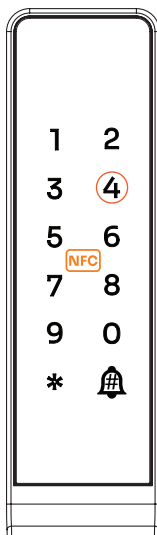
Press *
followed by #



Administrator
identity verification
Choose only one
method:
- Enter a password
and press #
- Scan the NFC card
- Scan fingerprint



Press 3
System Settings



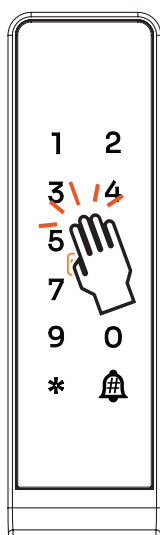
Press 4
Double Verification



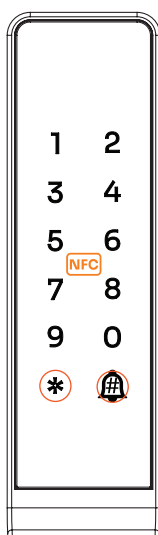
Select your desired option:

Press 1 to turn on.
Press 2 to turn off.

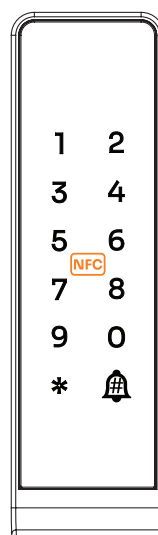
15.5 Record Info



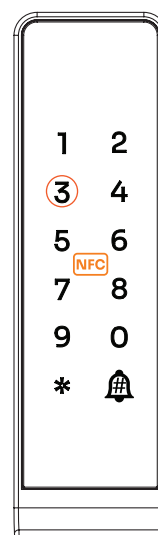
Touch the screen to
light up



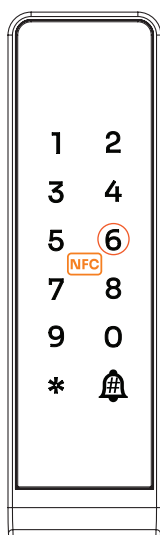
Press *
followed by #



Administrator
identity verification
Choose only one
method:
- Enter a password
and press #
- Scan the NFC card
- Scan fingerprint



Press 3
System Settings



Press 6
Record Info



System Voice Announcement for the Latest Unlock

The system will announce the most recent unlocking event as follows:

Sequence: 0

Unlock Type: Admin - Fingerprint

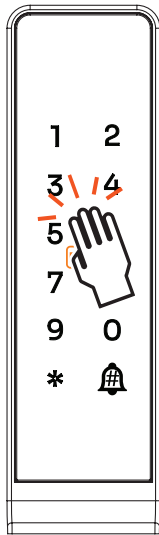
Door Unlock Time: Year 2024, Month 11, Day 06, Hour 12, Minute 41

Remote Management

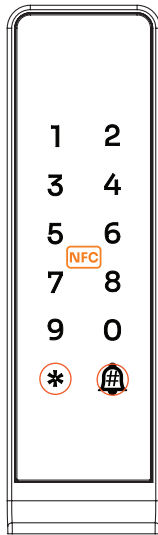
No. **CL-AI3**



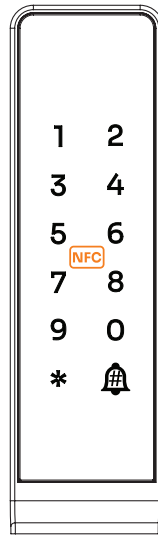
16. Network Setting



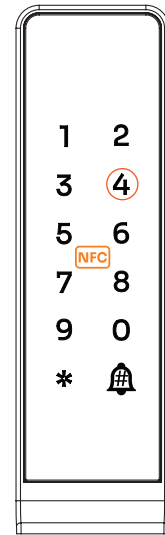
Touch the screen to
light up



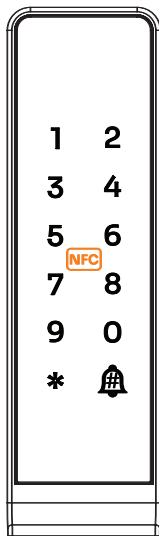
Press *
followed by #



Administrator
identity verification
Choose only one
method:
- Enter a password
and press #
- Scan the NFC card
- Scan fingerprint



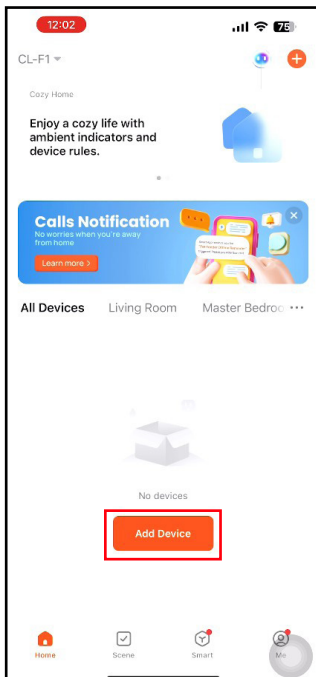
Press 4
Network setting



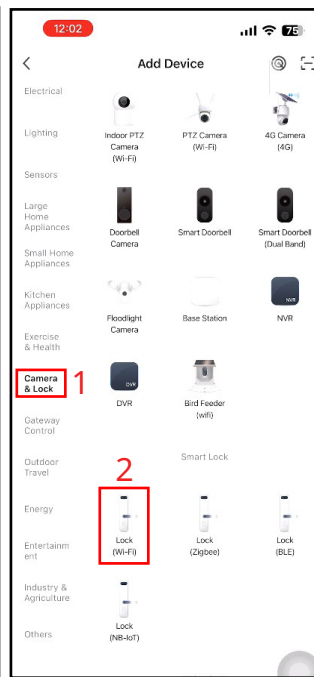
Select the option you want:

Press 1 to turn on.
Press 2 to turn off.

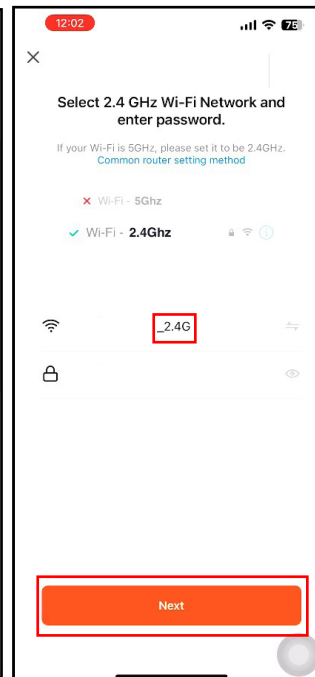
*When the battery is low, the application cannot be connected.



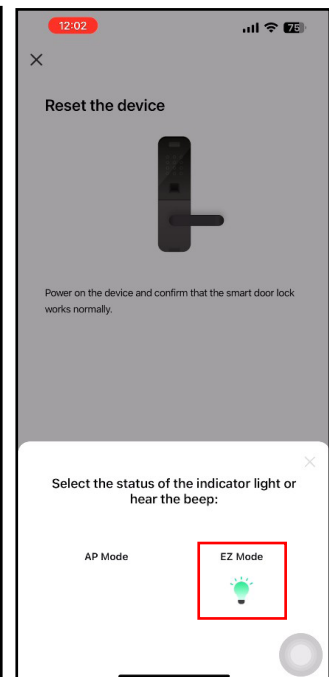
Open the TUYA app and press Add Device



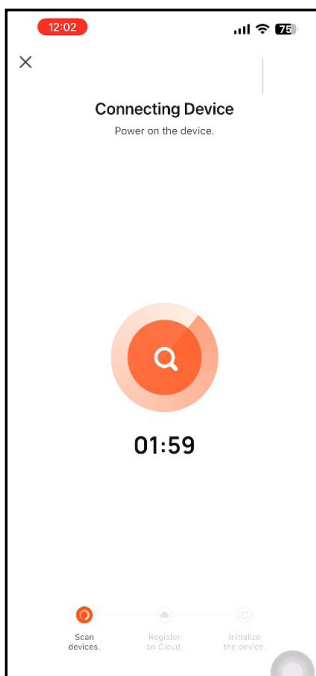
Press Camera & Lock and then press Lock (Wi-Fi)



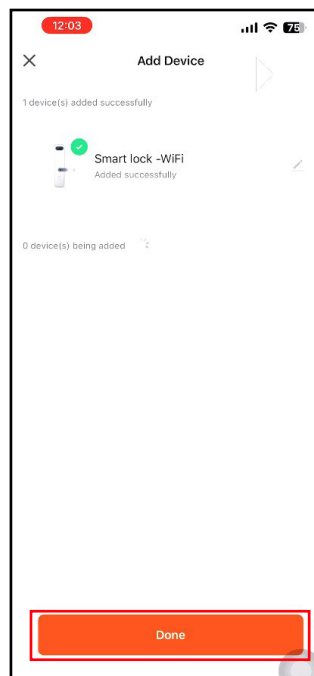
Check the Wi-Fi and then press Next



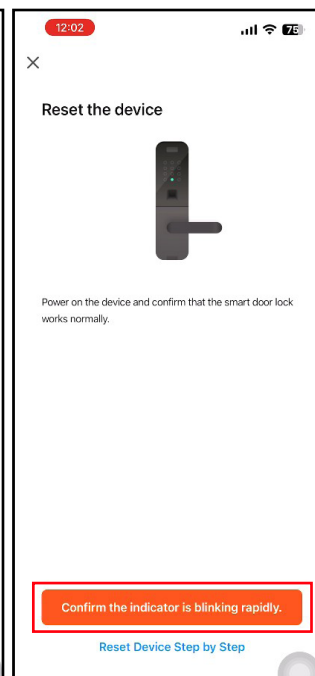
Press EZ Mode



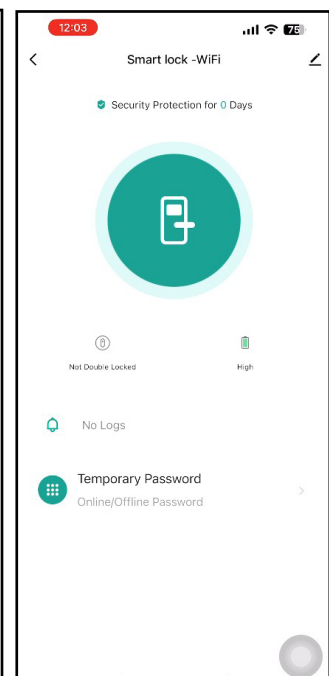
The system is establishing the connection.



Press Done



Press Confirm the indicator is blinking rapidly



Connection successful

17. Languages Code

English	555666880#
Vietnamese	555666881#
Portuguese	555666882#
Arabic	555666883#
Russian	555666884#
Thai	555666885#
Spanish	555666886#
Indonesian	555666887#
Chinese	555666888#

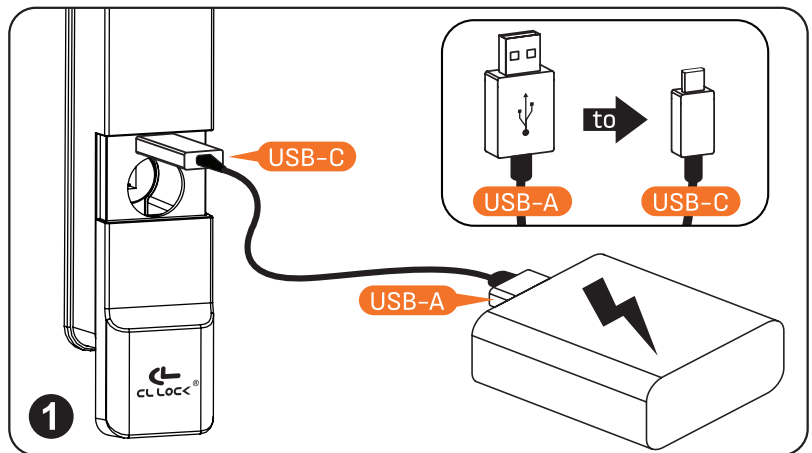
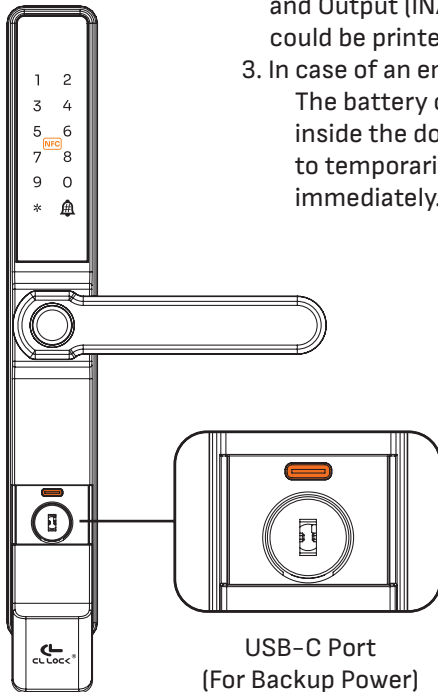
18.USB-C Port Usage

Using the USB-C port

Using Backup Power from a Power Bank

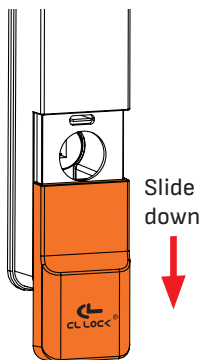
1. A USB-A to USB-C cable can be used for connection (see Image 1).
2. A USB-C to USB-C cable can also be used, but only if the Power Bank's port is labeled as both Input and Output (IN/OUT) within the same port. The labeling location may vary by manufacturer—it could be printed near the port or included in the Power Bank's specifications (see Image 2).
3. In case of an emergency when the battery is depleted and the lock is engaged:

The battery cannot be replaced immediately because the battery compartment is located inside the door. Users can connect a Power Bank to the USB-C port at the bottom of the lock to temporarily power it and regain access. Once unlocked, the batteries should be replaced immediately.

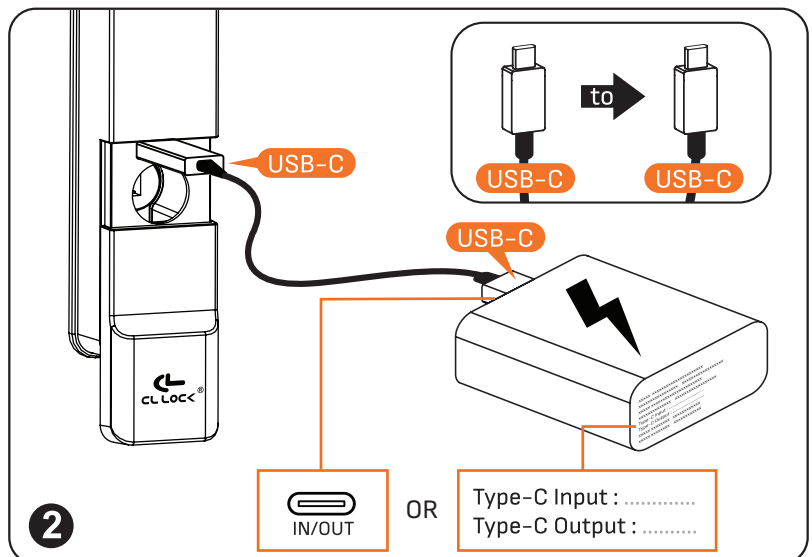
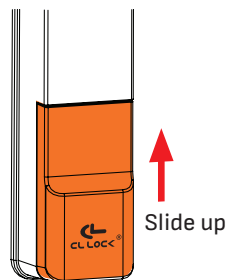


How to Open and Close the USB-C Port

- How to Open the USB-C Port
-Slide the cover down to open.

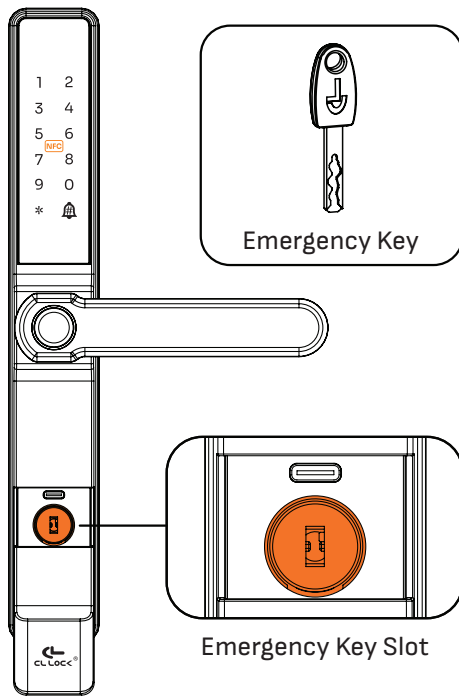


- How to Close the USB-C Port
-Slide the cover up to close.

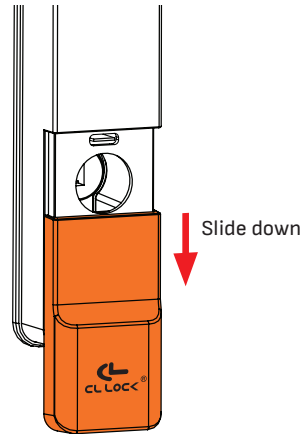


19.Unlocking with the Emergency Key

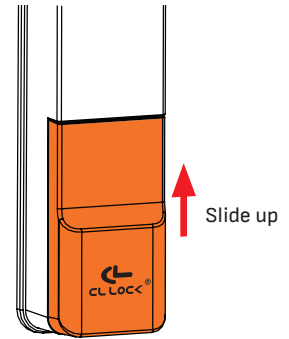
Using the Emergency Key



• How to Open the Emergency Key Slot
-Slide the cover down to Open.



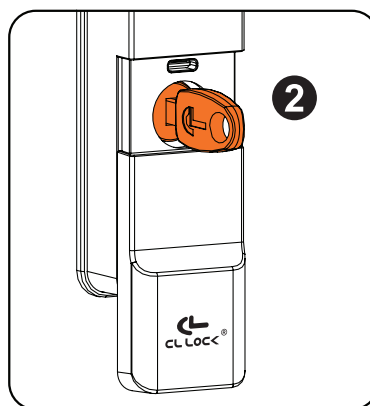
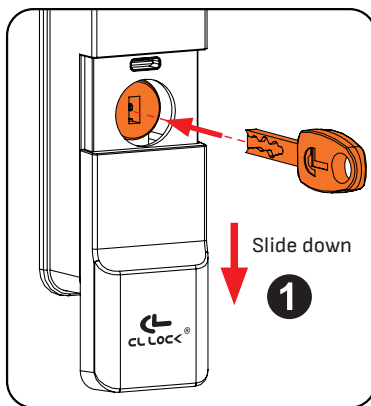
• How to Close the Emergency Key Slot
-Slide the cover up to Close.



Unlocking with the Emergency Key

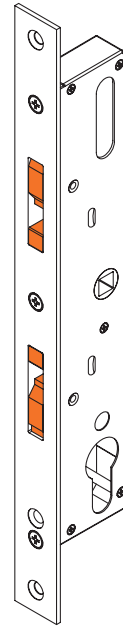
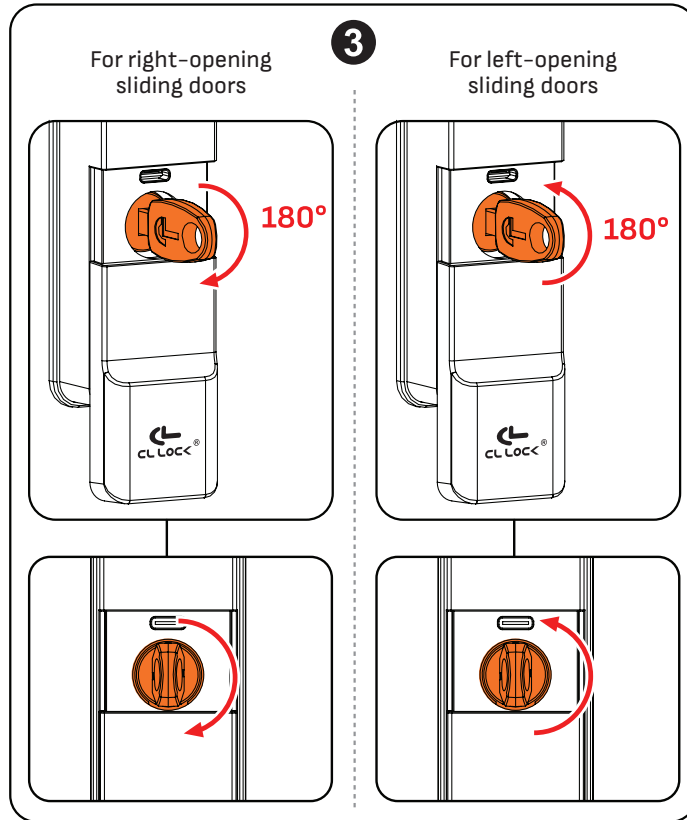
Lockcase for Sliding Door

1. Slide the emergency key cover down.
2. Insert the emergency key.



3. Turn the emergency key 180° to set the latch in the **unlocked position**.

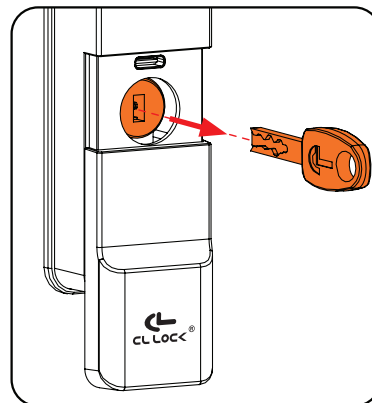
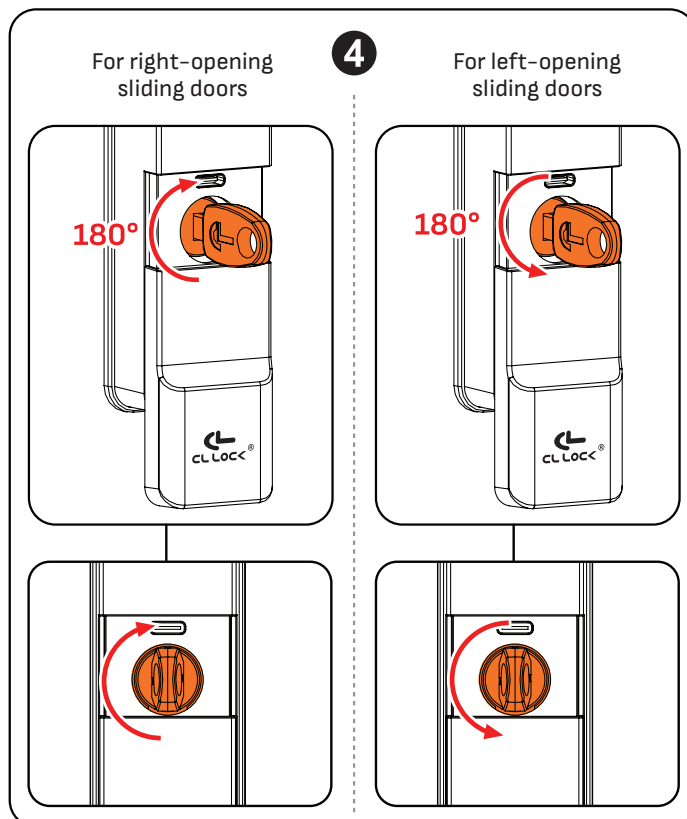
- For right-opening sliding doors, turn clockwise.
- For left-opening sliding doors, turn counterclockwise.



Unlocked state

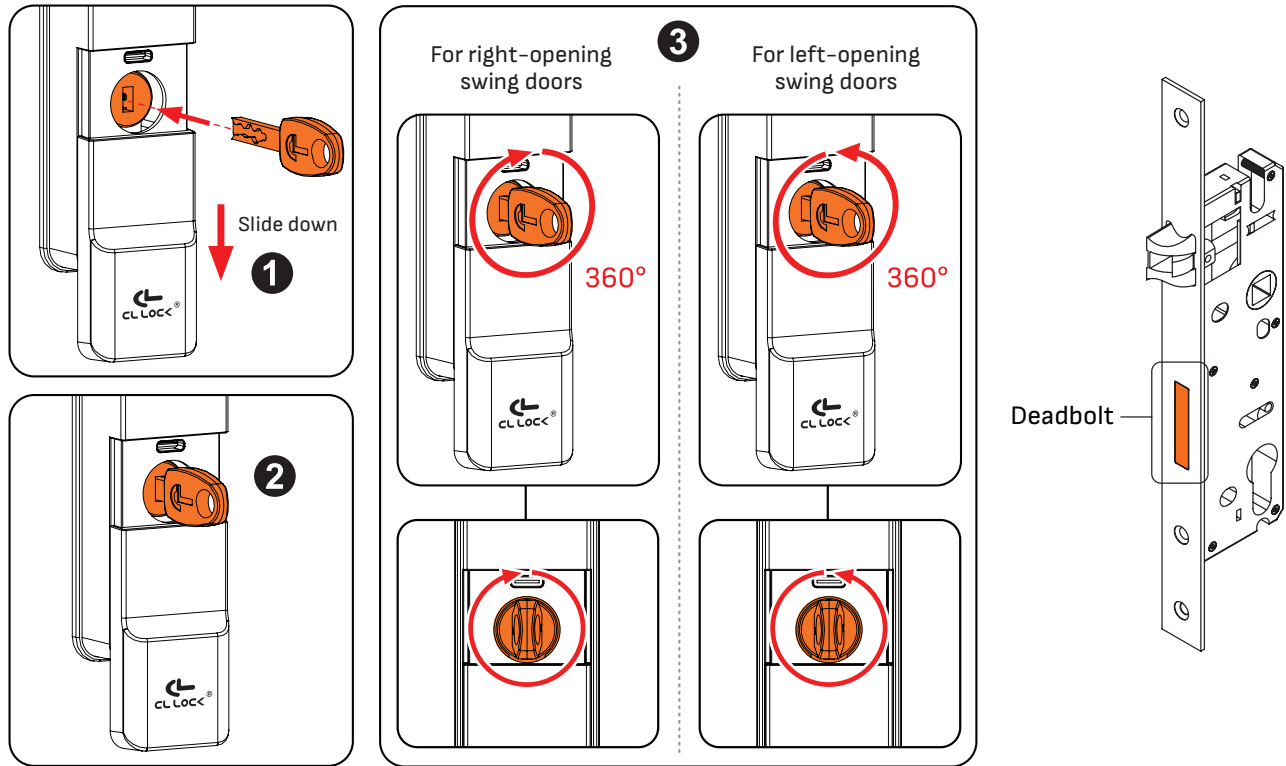
4. Then, turn the emergency key an additional 180° to remove it.

- For right-opening sliding doors, turn clockwise.
- For left-opening sliding doors, turn counterclockwise.

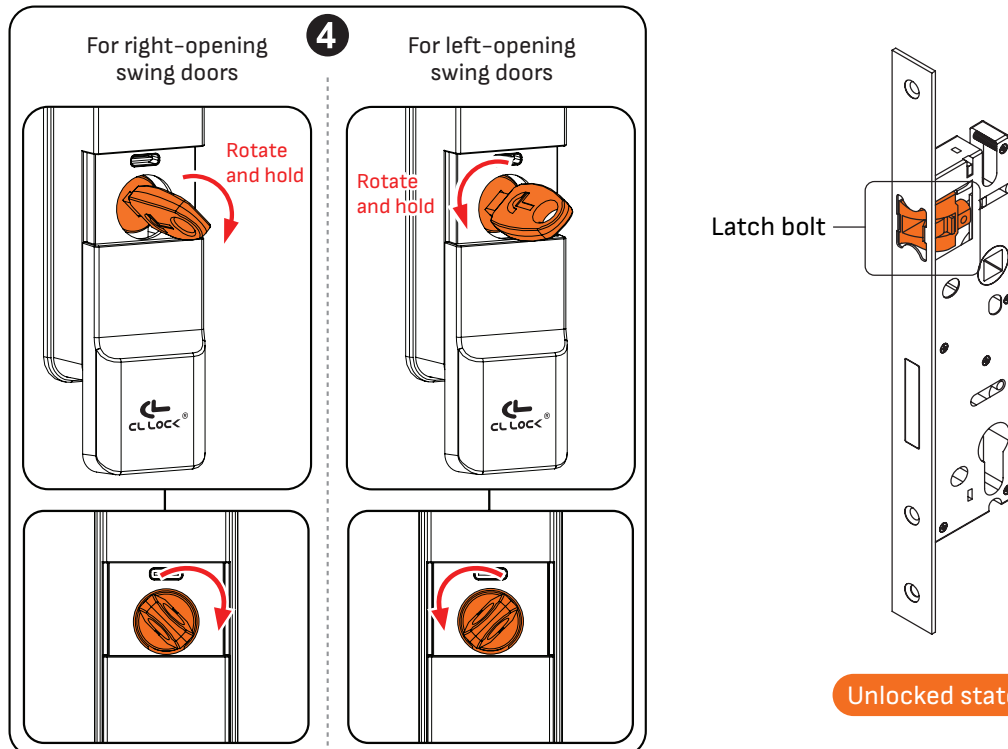


Lockcase for Swing Door

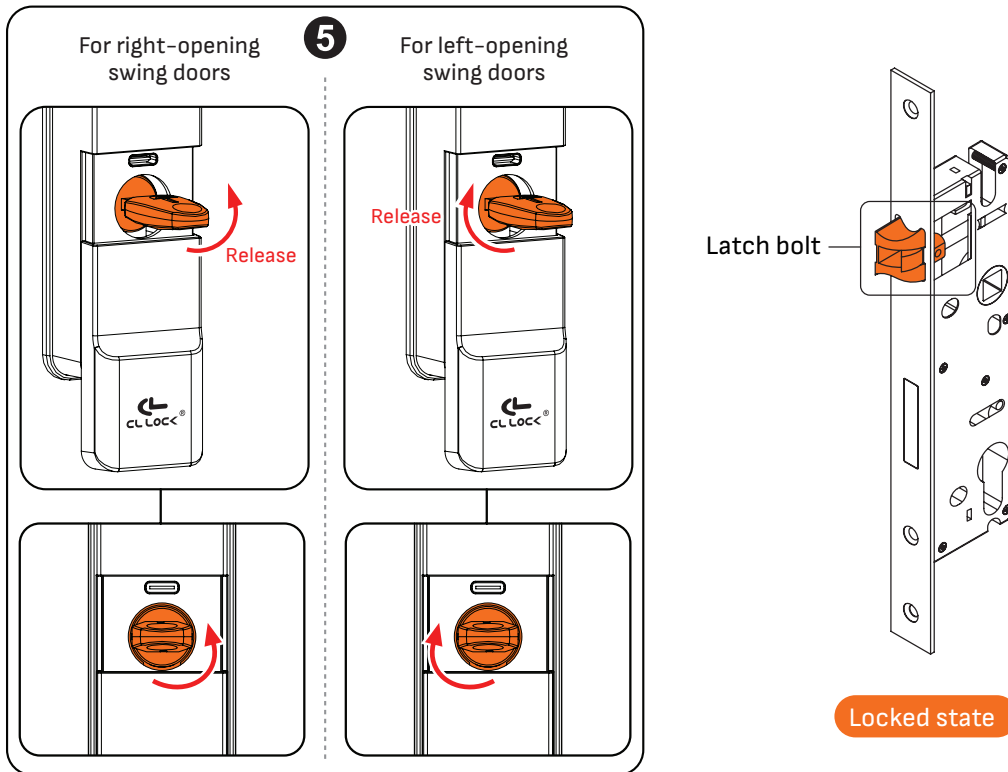
1. Slide the emergency key cover down.
2. Insert the emergency key.
3. Turn the emergency key 360°, the deadbolt retracts, entering the unlocked position (but the door cannot be opened yet).
 - For right-opening swing doors, turn clockwise.
 - For left-opening swing doors, turn counterclockwise.



4. Then turn the emergency key further to the end and hold it; the latch bolt retracts, entering the unlocked position, allowing the door to be opened.
 - For right-opening swing doors, turn clockwise.
 - For left-opening swing doors, turn counterclockwise.

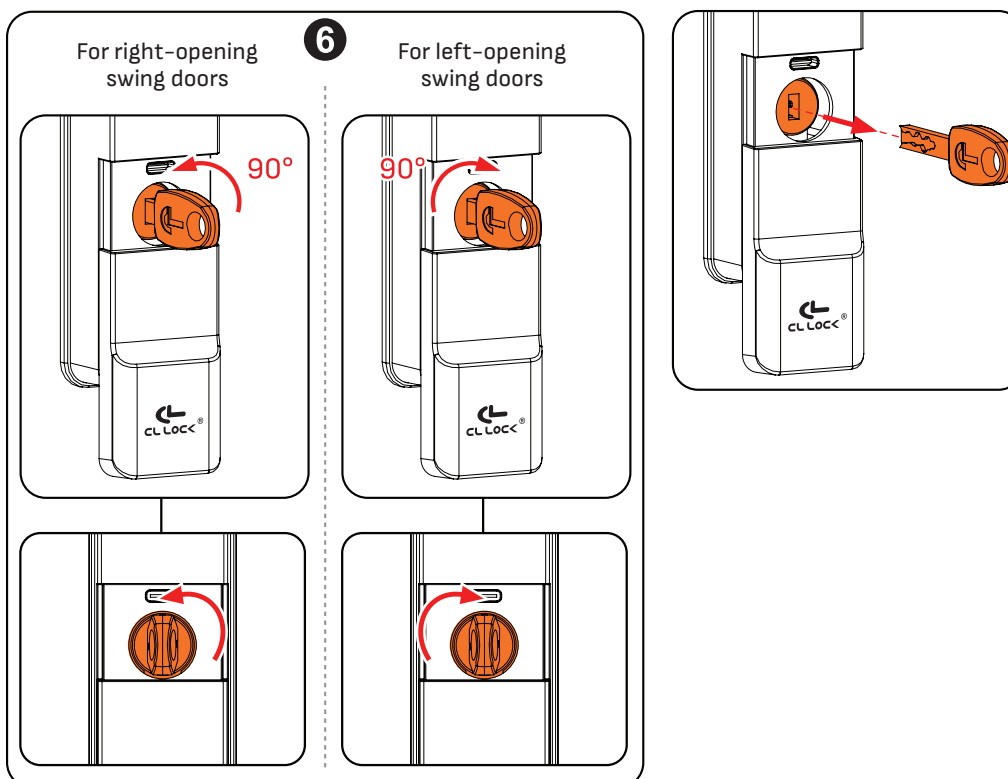


5. When released, the emergency key automatically returns to the 90° position; the latch bolt extends, entering the **locked position**.



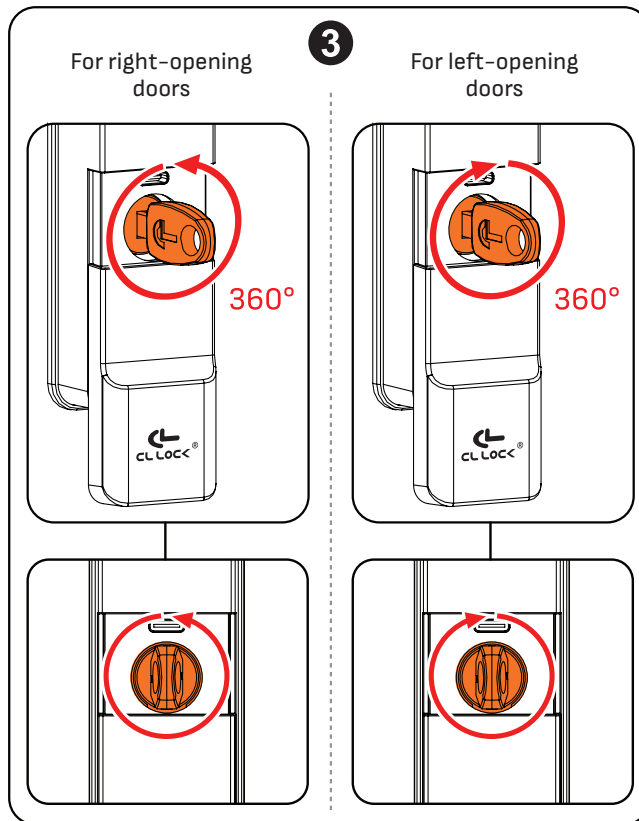
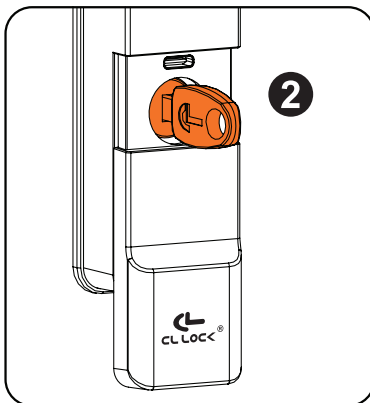
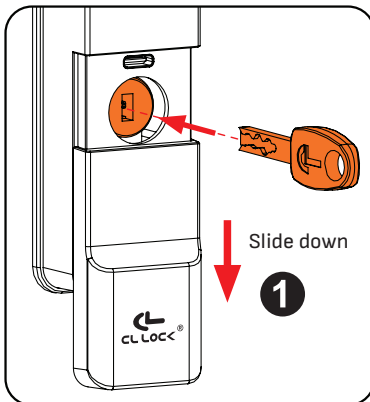
6. Turn the emergency key back to the 90° position to remove the key.

- For right-opening swing doors, turn counterclockwise.
- For left-opening swing doors, turn clockwise.

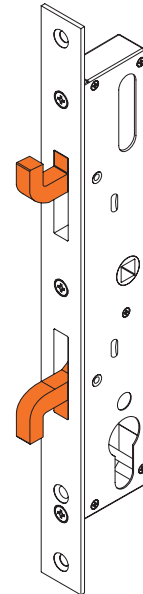


20. Locking with the Emergency Key

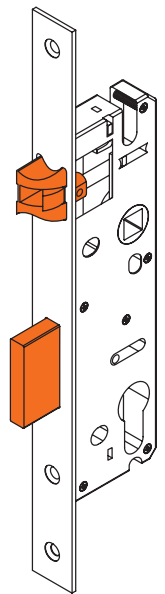
1. Slide the emergency key cover down.
2. Insert the emergency key.
3. Turn the emergency key 360° to set the latch in the **locked position**.
 - For right-opening doors, turn counterclockwise.
 - For left-opening doors, turn clockwise.



Lockcase for Sliding Door

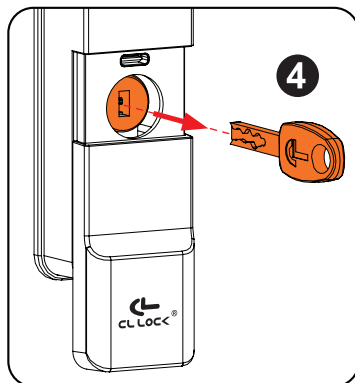


Lockcase for Swing Door



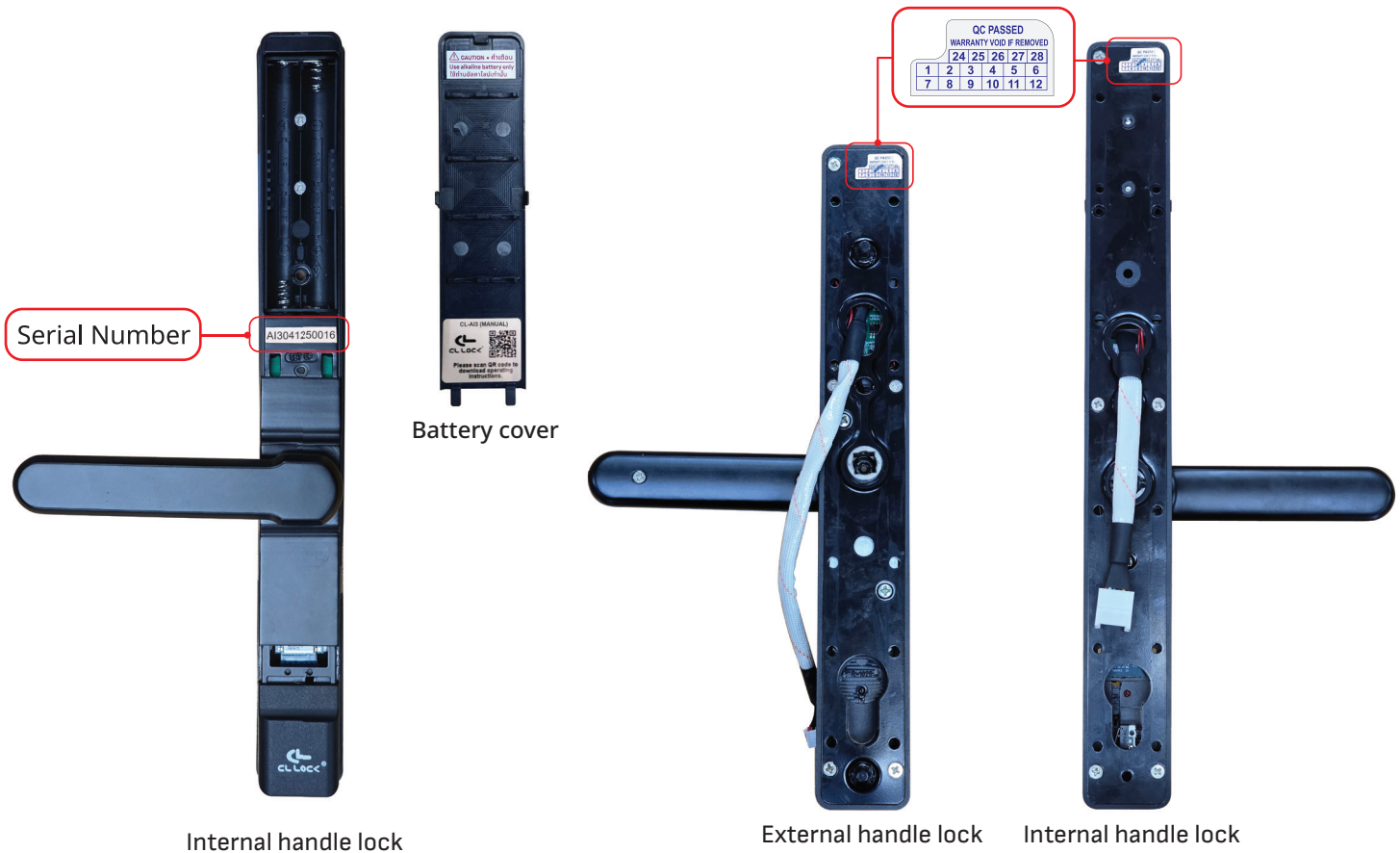
Locked state

4. Remove the emergency key.



21. Product Warranty Policy

1. The warranty sticker attached to the product must be intact, not torn or missing (see the illustration).



2. Removing the red terminal from the circuit board will immediately void the warranty. (See illustration)



3. Any damage to the device, such as breakage, cracking, dents, burns, electrical short circuits, chipping, bending, warping, fractures, falls, punctures, water intrusion, scratches on the circuit board, or missing parts (e.g., screen, body, buttons), will result in the warranty being voided immediately.
4. Damage caused by accidents, fires, natural disasters (e.g., lightning, floods, earthquakes, severe weather), or insects and animals will result in the warranty being voided immediately.
5. Damage caused by improper use, connecting incompatible devices, unauthorized repairs or modifications, or using non-genuine replacement parts will result in the warranty being voided immediately.
6. Products exhibiting abnormal conditions not caused by normal usage or improper storage (e.g., adhesive residue, oxidation stains, watermarks, animal droppings, rust, or broken circuit traces) will result in the warranty being voided immediately.
7. The company reserves the right to reject product returns if the customer is dissatisfied with the product after it has been unboxed or used.
8. The company reserves the right to amend or change warranty conditions without prior notice.

22. Safety Manual and Precautions

1. Alkaline batteries: Please do not bring them near a fire source to prevent the risk of explosion.
2. Please do not attempt to disassemble the product to avoid damage.
3. Do not scratch the fingerprint scanner with sharp objects as it may cause permanent damage.
4. Do not leave the product in areas where water may leak or splash.
5. Do not connect the device to household wiring.
6. For cleaning, please wipe with a soft cloth.
7. Do not remove the battery during the setup process.
8. After receiving a low battery warning for the key, please replace the battery immediately.
9. Do not use rechargeable batteries as they may cause excessive power and potentially damage the device's functionality.

23. Additional Information

1. When the battery drops below 4.8–5 volts, a warning will be displayed to replace the battery. If the battery drops below 4.2 volts, the key will automatically shut down.
2. To set the time, enter the year, month, day, and time. Please sync with the application to ensure accurate time.
3. During the setup process, if there is no action within 10 seconds, the system will automatically exit.

